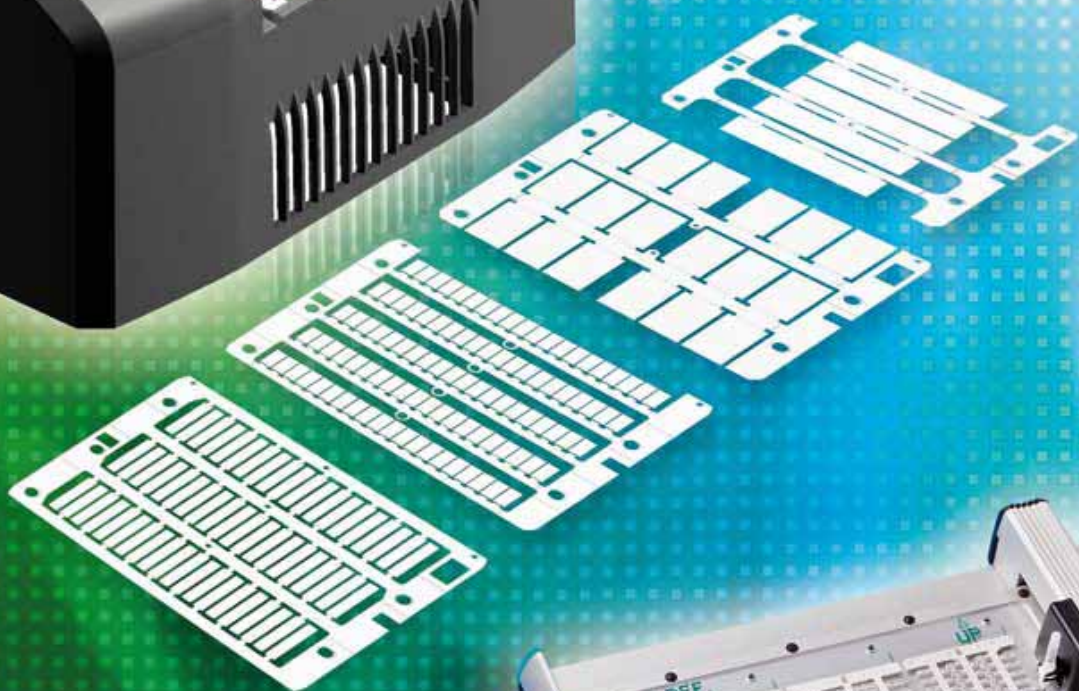




Industrial marking system

NEW





Cabur plotter system

CABURPLOT system consists of a flatbed A3 plotter which, **on a single plate**, allows you to print on:

- tags for sleeve for cables' identification
- tags for terminal blocks
- tags for push-buttons
- tags for contactors
- modular strips for electrical distribution boards
- board's identification tags.

The aluminum frame and the innovative design, as opposed to usual solutions available on the market, make of CABURPLOT a proposal in the forefront of its kind. Unlike similar products, CABURPLOT ensures a longer durability of the pen, since having integrated into the system, in addition to the common antidessiccation pen, also a stand-by position **in a special airtight pen holder**, which prevents accidental tampering and tedious manual operations outside the system.

Technical data:

- Type: flat base plotter
- Printing area: 440 x 305 mm
- Pen holder: 4
- Power supply: separate power supply unit
- Input voltage: 100 – 240V C.A. 50 – 60Hz
- Output Voltage: 24V C.C.
- PC interface: parallel and USB 1.1
- Dimensions: 660 x 440 x 125 mm
- Weight: 8 Kg

Package includes

- KLOTTER500 Plotter
- Power supply unit
- Parallel cable
- USB cable
- Antidessiccation pen Ø 0,25 mm
- 5 extra indelible black ink cartridges
- Marking Pro Software on CD, including license for 5 installations and complete user manual in electronic format.

Accessories



PADCABUR

CABURPLOT adaptation plate.



INKCART5

Indelible ink 5 cartridges per carton.



POMPASP

Reactivating pen.



PEN025CAB

Antidessiccation pen for plotter 0.25 mm diameter.



INKBOTT1

Ink Bottle 30 ml.



SWMP20

Marking Pro v. 2.0 Software - 1 CD - license valid for 5 installations.



PEN035CAB

Antidessiccation pen for plotter 0.35 mm diameter.



KITPULIZIA

Pen cleaning kit.





SAMPLE IMAGE

AVAILABLE
SUMMER 2010



Technical data:

- Print Technology: Inkjet
- Print Black and White
- Interface: USB
- Resolution: 360 Dpi
- Ink: refillable cartridges
- Print Speed: 14,000 cards per hour
- Consumption: 1 refill about 80,000 cards
- Windows version: all
- Dimensions: (WxDxH)
330 x 370 x 220 mm
- Weight: approx 10 Kg

Caburjet printer

The CABURJET inkjet printer is characterized by narrow dimensions for minimum encumbrance and from an innovative design, conceived for a quick and easy use, without maintenance problems. It is an ideal solution for continuous, automatic and fast printing on:

- tags for sleeve for cables' identification
- tags for terminal blocks
- tags for push-buttons
- tags for contactors
- modular strips for electrical distribution boards
- board's identification tags.

The pack contains:

- CaburJet Printer
- USB cable
- Power cord
- Ink Cartridge

This is a completely innovative solution, designed to meet the many needs also in the industrial field at competitive prices. **The printer has an integrated automatic loader (STACK FEEDER), which accepts all of the products mentioned above even if they are mixed; and it is also possible to print on individual stems by simply placing them at the base of the loader as a normal sheet of paper.**

The loader contains 45 modules for a total of 2,700 cards NUT12 series (tags for sleeve, length 12 mm).

One hour printing allows to have 14,000 cards, ready to use. The fireproof material (polycarbonate) and the ink, used in the modules' production, allow to use quite immediately the just printed form, which is indelible according to CEI 16-7.

Advantages

- 1 **PLUG & PRINT TECHNOLOGY**
- 2 **NO PRINTER DRIVER INSTALLATION**
- 3 **READY TO USE: NO CONFIGURATION NEEDED**
- 4 **SO EASY TO USE THAT NO USER MANUAL IS REQUIRED**
- 5 **SMALL: SMALL DIMENSIONS FOR MINIMUM ENCUMBRANCE**
- 6 **EXTENDED WARRANTY: PRINTER AND HEAD**

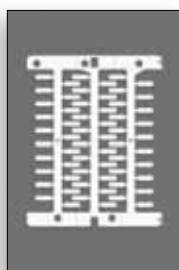


Tags for Cable

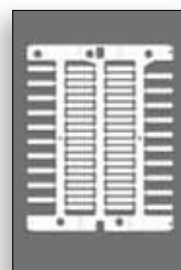


MATERIAL: FIREPROOF POLYCARBONATE.

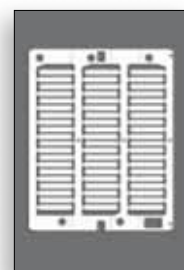
Code	Description	Qty tags/pk
NUT12	Tags for sleeve length 12 mm	1.500
NUT18	Tags for sleeve length 18 mm	1.500
NUT23	Tags for sleeve length 23 mm	1.500



NUT 12



NUT 18



NUT 23

Transparent sleeve for tags

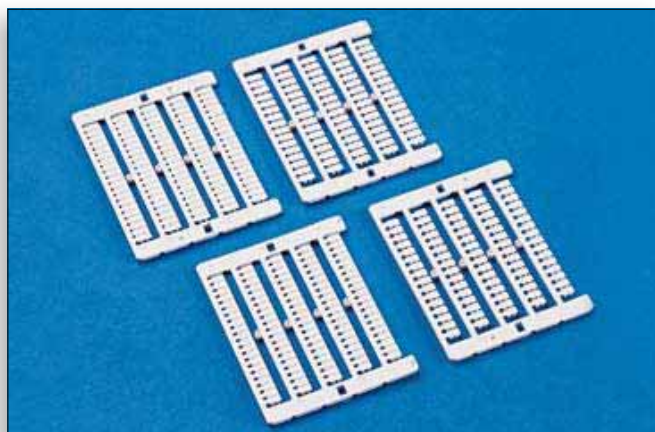
Code	Description	Qty tags/pk
TUB1200	Sleeve for cable sections from 0,14 mm ² a 0,25 mm ² length 12 mm	1.000
TUB1201	Sleeve for cable sections from 0,5 mm ² a 4 mm ² length 12 mm	3.000
TUB1202	Sleeve for cable sections from 1,5 mm ² a 6 mm ² length 12 mm	3.000
TUB1203	Sleeve for cable sections from 6 mm ² a 16 mm ² length 12 mm	1.000
TUB1204	Sleeve for cable sections from 25 mm ² a 35 mm ² length 12 mm	500
TUB1800	Sleeve for cable sections from 0,14 mm ² a 0,25 mm ² length 18 mm	1.000
TUB1801	Sleeve for cable sections from 0,5 mm ² a 4 mm ² length 18 mm	3.000
TUB1802	Sleeve for cable sections from 1,5 mm ² a 6 mm ² length 18 mm	3.000
TUB1803	Sleeve for cable sections from 6 mm ² a 16 mm ² length 18 mm	1.000
TUB1804	Sleeve for cable sections from 25 mm ² a 35 mm ² length 18 mm	500
TUB2300	Sleeve for cable sections from 0,14 mm ² a 0,25 mm ² length 23 mm	1.000
TUB2301	Sleeve for cable sections from 0,5 mm ² a 4 mm ² length 23 mm	3.000
TUB2302	Sleeve for cable sections from 1,5 mm ² a 6 mm ² length 23 mm	3.000
TUB2303	Sleeve for cable sections from 6 mm ² a 16 mm ² length 23 mm	1.000
TUB2304	Sleeve for cable sections from 25 mm ² a 35 mm ² length 23 mm	500



TAG

THE QUANTITIES ARE REFERRED TO THE NUMBER OF TAGS PER PACK

Tags for Terminal Block



MATERIAL: FIREPROOF POLYCARBONATE.

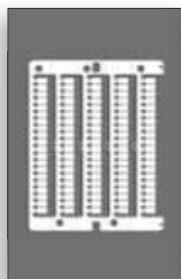
TAGS FOR CABUR TERMINAL BLOCKS

Code	Description	Qty tags/pk
NU0851	Terminal block's tag 8 mm mounting pitch on CBC2 and single HMM2 throughout the Cabur series	1.500
NU0861	Terminal block's tag 8 mm mounting pitch on CBC4 and single HMM4 throughout the Cabur series	1.200
NU1051	Terminal block's tag 10 mm mounting pitch on CBC2 and single HMM2 throughout the Cabur series	1.500
NU1061	Terminal block's tag 10 mm mounting pitch on CBC4 and single HMM4 throughout the Cabur series	1.200
SH004	Terminal block's tag 10 mm mounting pitch on HMM.1	1.500

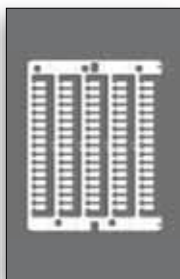
TAGS FOR OTHER TERMINAL BLOCKS

Code	Description	Qty tags/pk
NUWDU50	Tag for Weid WDU ZDU 10 mm terminal blocks mounting pitch on WDU25 and ZDU25	1.500
NUWDK50	Tag for Weid WDK 10 mm terminal blocks mounting pitch on WDK25	1.500
NUPUTUK50	Tag for Phoenix UK-UT-ST Series 10 mm terminal blocks mounting pitch 5,2 on UK25 UT25 ST25	1.500

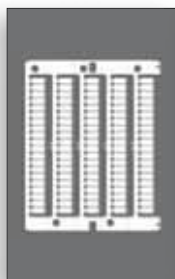
NU0851



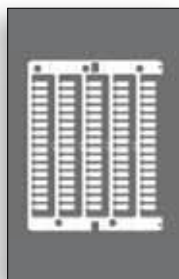
NU0861



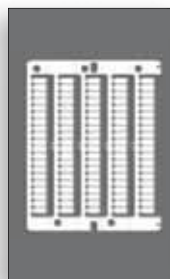
NU1051



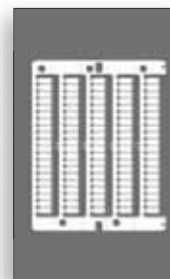
NU1061



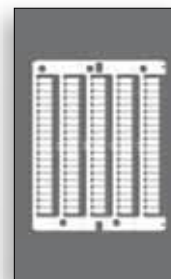
NUWDU50



NUWDK50



NUPUTUK50



MOUNTING ON CABUR TERMINAL BLOCKS SECTION 2, 5, 4 mm²



1 Disconnect the stem from the module.



3 Engage the tags directly on the terminal blocks' series with slight pressure.



2 Disconnect the pre-notched heads from the stem.



4 Disconnect the remaining stem by turning down.

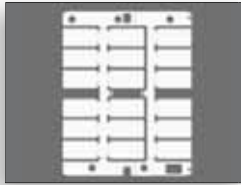


TAG

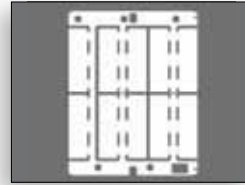
THE QUANTITIES ARE REFERRED TO THE NUMBER OF TAGS PER PACK

Tag holders Name tags

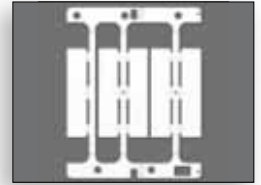
Code	Description	Qty tags/pk
TA2715W	White 27 x 15 mm Name tag	270
TA5015W	White 50 x 15 mm Name tag	150
TA6715W	White 67 x 15 mm Name tag	75



TA2715W



TA5015W

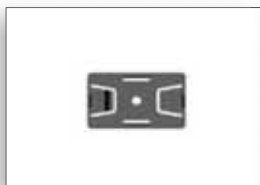


TA6715W

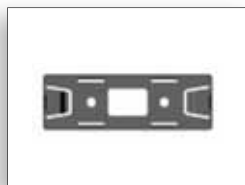
Code	Description	Qty tags/pk
PT3017B	Tag holders for Name tags	270
PT5217B	Tag holders for Name tags	150
PT7017B	Tag holders for Name tags	75
PTD022	Tag holders for d.22 push buttons	270
PTD225	Tag holders for d.22,5 push buttons specific for Telemecanique zb4	270

Code	Description	Qty tags/pk
VET2715	Slide protection for TA2715W	270
VET5015	Slide protection for TA5015W	150
VET6715	Slide protection for TA6715W	75

MATERIAL:
FIREPROOF
POLYCARBONATE.



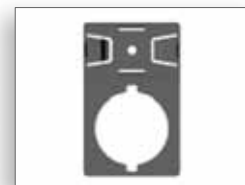
PT3017B



PT5217B



PT7017B



PTD022



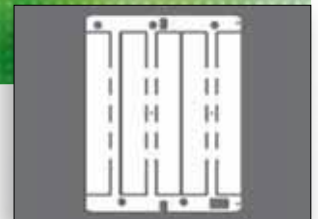
PTD225

Strips

Code	Description	Qty tags/pk
ST105W	Strip for modular channel 6 modules 105 mm	75

Features

Modular strips used to identify distribution boards also for domestic use.



Channels



Code	Description	Qty tags/pk
BIN043015	Channel for name tags and strips 430 mm height 15 mm	30
CBIN043015	Cover for BIN043015 height 15 mm	30
BIN100015	Channel for name tags and strips 1000 mm Height 15 mm	30
CBIN100015	Cover for BIN100015 height 15 mm	30

THE
QUANTITIES
ARE REFERRED
TO THE
NUMBER OF
TAGS PER PACK

TAG

MarKing PRO

MarKing PRO

SYSTEM REQUIREMENTS
PC running MS Windows 95 or later • 512MB RAM • Hard disk: 50Mb.

Cabur software for marking: **code SWMP20**

Marking Pro is an applicative software for marking to be used, eg., with CaburJet printer and the CaburPlot plotter.

The program, easy to use and extremely versatile, allows to set the parameters for the marking, with sequences of characters and symbols which can be varied according to specific user's needs, and to print on Cabur's cards, which can be selected from a database inside the software. Marking Pro system allows to use multiple printing devices at the same time.

Thanks to the intuitive user-friendly interface and the graphic elements, Marking Pro is easy to use and allows to see the final result before the printing without requiring particular computer skills.

Furthermore, Cabur offers a marking realization service, which can be provided on the basis of the files created by the Customer by using Marking Pro. By sending your Marking Pro files to Cabur, you will get an offer and a service as efficient as possible and with a sure result.

Advantages

- 1** VERSATILITY IN THE PLACEMENT AND THE CHOICE OF CHARACTERS
- 2** INTUITIVE USER-FRIENDLY INTERFACE
- 3** POSSIBILITY TO ASK FOR A QUICKLY AND EFFICIENT MARKING SERVICE
- 4** GRAPHIC EDITOR OR NOT (ACCORDING TO USER'S NEEDS)
- 5** NO NEED OF INITIAL CONFIGURATION
- 6** IMPORT AND EXPORT OF FILES TO AND FROM ELECTRICAL CAD
- 7** IMAGE CAPTURE BMP, JPG, TIFF AND GIF FORMATS



Speed Rail

SpeedRail

SYSTEM REQUIREMENTS
PC running MS Windows 95 or later • 512MB RAM
• Hard Disk: 50MB for basic installation / 155 Mb for full installation (incl. video tutorial / help) • Video viewer: MS Windows Media Player or compatible.

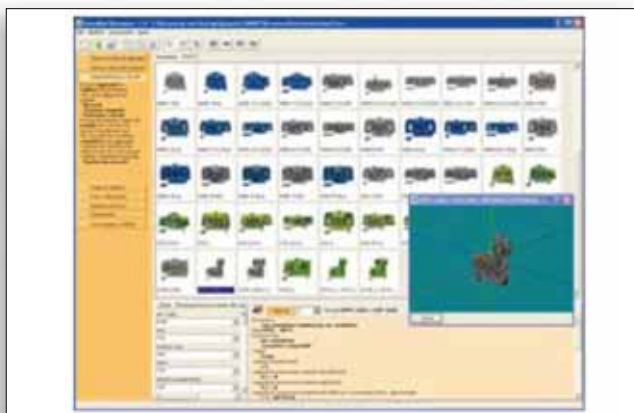
Software for the design of terminal blocks: **code SWSR1**

Speed Rail is an applicative software, conceived to simplify and speed up the composition of a rail assembly, by using Cabur's terminal blocks.

Thanks to the user-friendly interface and to the graphic elements, Speed Rail is simply to use and does not require particular computer skills; furthermore the software leads and assists the user throughout the whole rail assembly's drawing phases

- removing and putting automatically the End Sections, as needed, to protect the uncovered contacts or by placing them where the insulation has to be maintained
- putting automatically cross-connection barriers whereas connections are too close
- reporting the danger of short-circuit and suggesting to put an end section or a cross-connection barrier
- placing the connections in an optimal way in order to ensure the maximum insulation.

Speed Rail allows you to plan, quickly and efficiently, your rail assembly starting from the mounting rail's holes and the arrangement of supports, going up to the laying of the protection cover, and passing through the insertion of the terminal blocks, the marking, the creation of connections between the terminal blocks, going into details up to the insertion of the modular test plugs, or even plugs into sockets for derivation plugs.



Advantages

- 1** MORE EFFICIENT AND FASTER DESIGN OF RAIL ASSEMBLIES
- 2** AUTOMATIC CHECKING AND GUIDED CORRECTION
- 3** AUTOMATIC PROCESSING OF THE BILL OF MATERIALS
- 4** POSSIBILITY TO GET AN ESTIMATE WITH A SINGLE CLICK
- 5** NO CAD PLATFORMS ARE REQUIRED
- 6** POSSIBILITY TO IMPORT AND EXPORT FILES TO AND FOR MARKING PRO CSV FORMAT



Kits and Accessories



ADRKITGR

Adaptation kit for GRAPHTEC plotter 5100-5300-303 series comprising:

- 1 PADGRAPH plate
- 1 SWMP20

Marking Pro software.



ADRKITEK

EKTEAM VP500 plotter adaptation kit comprising:

- 1 PADCABUR plate
- 1 SWMP20

Marking Pro software.



ADRKITMU

Adaptation kit for MUTOH IP220 plotter comprising:

- 1 PADMUTHO plate
- 1 SWMP20

Marking Pro software



PEN035GRA

Antidesiccation pen for Graphtec plotter 0.35 mm diameter.



PEN035CAB

Antidesiccation pen for EK VP500 and MUTOH plotter 0.35 mm diameter.



INKCART5

Indelible ink 5 cartridges per carton.



INKBOTT1

30 ml indelible ink Bottle.



KITPULIZIA

Pen cleaning kit.



POMPASP

Reactivating pen.

Our products range includes:

For more information visit
www.cabur.eu

Terminal blocks for boards and electrical installations

- Polyamide screw-clamp terminal blocks
- Polyamide spring-clamp terminal blocks
- Melamine terminal blocks
- Control terminal boards
- Power terminal boards
- Distribution terminal boards
- Loose terminal blocks



Electronic products for electrical boards

- Power supply units
- Analog modules
- Relay modules
- Signal converters



Connection and protection systems for photovoltaic installations

- Mounting systems for photovoltaic panels
- Connectors
- Cables
- Tools
- Control boards and their components
- Surge protection devices



Cabur srl

Loc. Isola Grande 45 - 17041 - Altare (SV) - Italy
Tel. +39 019 58999.1 - Fax: +39 019 58999.280
e-mail: info@cabur.it
www.cabur.eu

