



Caravan socket with angled plug

Before inserting the coupler pull blue part of the plug until interlock snaps into place. After use lift up interlock and push back so that the spring cover fits tightly.



Caravan angled coupler with Schuko socket on reverse side for use with additional electrical devices in an outer tent or outside the caravan.



Panel socket can be locked with plug

The shown plug and socket can be locked with a padlock. The eye hooks on the panel socket, on the spring cover and on the plug offer double protection:

- protection against disconnection of the electrical circuit (plugged condition)
- protection against unauthorized current drain (unplugged condition)

Wall sockets

16 A p. 223

Mondo wall sockets

16 A p. 223



Panel sockets

16 A p. 223

Mondo panel sockets

16 A p. 225

Padlock

p. 225



Plugs

16 A p. 225



Caravan-built-in appliance inlets

16 A p. 225

Wall mounting appliance inlet

16 A p. 225



Angled plugs

16 A p. 227



Couplers

16 A p. 227



Angled couplers

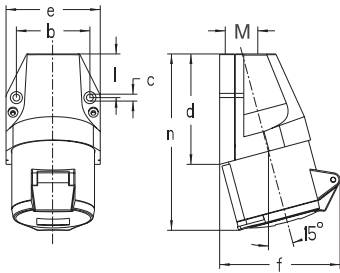
16 A p. 227



Caravan combination units

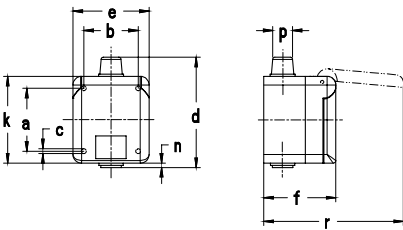
16 A p. 227-229





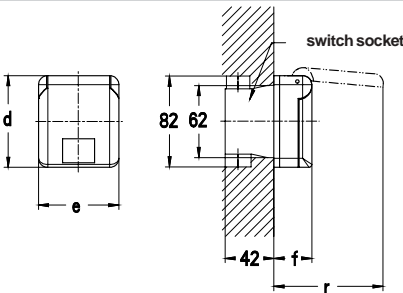
Amp.	16
Pole	3
b	45.5
c	5.3
d	74
e	60
f	75
l	28
n	120
M	20

Wall socket,
external fixing,
1 top cable entry,
IP 44



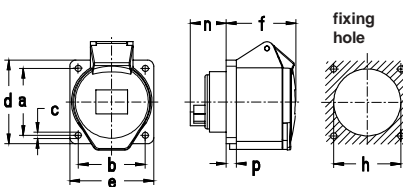
Amp.	16
Pole	3
a	58
b	50
c	4.5
d	98
e	70
f	68
k	80
n	5
p	7/17.5
r	130

mondo Wall socket,
surface mounting,
RAL 7035 light grey,
IP 44



Amp.	16
pole	3
d	80
e	70
f	33
r	96

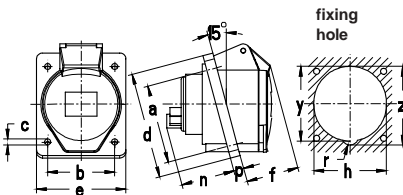
mondo Wall socket
flush mounting,
RAL 7035 light grey,
with plaster thickness adjustment,
IP 44



Amp.	16
Pole	3
a	47
b	47
c	5.5
d	62
e	62
f	52
h	46
n	28
p	6

fixing dimensions = a + b,
flange dimensions = d + e

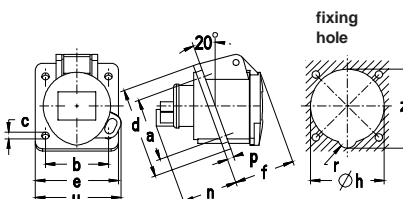
Panel socket, straight,
Flange dimension 62 x 62,
fingerproof acc. to BGV A2,
IP 44



Amp.	16
Pole	3
a	47
b	47
c	5.5
d	68
e	62
f	45
h	51
n	41
p	6
r	6.5
y	52.5
z	57

fixing dimensions = a + b,
flange dimensions = d + e

Panel socket, angled,
Flange dimensions 68 x 62,
fingerproof acc. to BGV A2,
IP 44



Amp.	16
Pole	3
a	47
b	47
c	5.5
d	68
e	62
f	46
h	55
n	41
p	5
r	5
s	23.5
u	65
z	59

fixing dimensions = a + b,
flange dimensions = d + e

Panel socket, angled,
with eye hook for padlock (to lock with plug
212 306)
IP 44



2P+E

Ampère

Poles

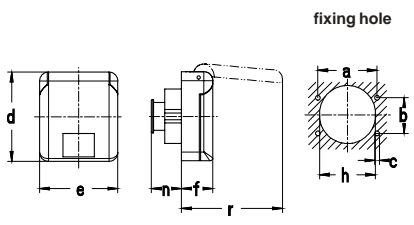
230 V
50 / 60 Hz
3pole
6h



g

Part numbers

 <p><i>pic. 110306</i></p>	16	3	110 306	10	161
 <p><i>pic. 117306</i></p>	16	3	117 306	10	187
 <p><i>pic. 418306LG</i></p>	16	3	418 306 LG	10	155
 <p><i>pic. 410306</i></p>	16	3	410 306	10	117
 <p><i>pic. 510306</i></p>	16	3	510 306	10	120
 <p><i>pic. 512306</i></p>	16	3	512 306	10	120



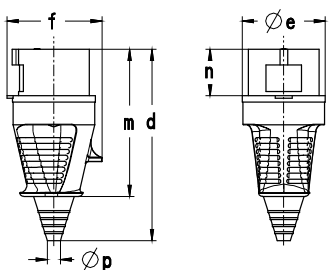
fixing hole

Amp.	16
Pole	3
a	53
b	32
c	4.2
d	80
e	70
f	28
h	50
n	29
r	91

fixing dimensions = a + b,
flange dimensions = d + e

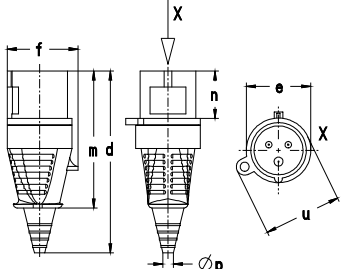
mondo Panel socket, straight,
RAL 7035 light grey,
IP 44

Padlock



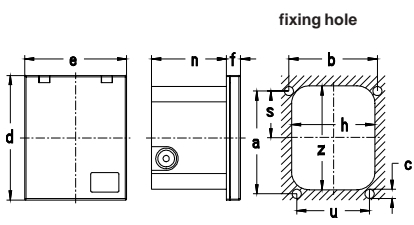
Amp.	16
Pole	3
d	143
Øe	51
f	60
m	108
n	37
Øp	7/13

Plug,
with flexible cable entry,
IP 44



Amp.	16
Pole	3
d	143
e	51
f	60
m	108
n	37
Øp	7/13
u	61

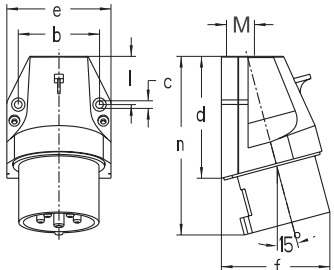
Plug,
with flexible cable entry,
with eye hook for padlock (to lock with panel
socket 512 306),
IP 44



fixing hole

Amp.	16
Pole	3
a	99
b	85
c	4.4
d	120
e	98
f	15
h	80
n	72
p	8/13
r	17
s	45
u	70
z	100

Caravan built-in appliance inlet,
with fastening frame (also serving as
template for drilling holes),
IP 44



Amp.	16
Pole	3
b	45.5
c	5.3
d	74
e	60
f	60
l	28
n	110
M	20

Wall mounting appliance inlet,
external fixing,
1 top cable entry,
IP 44



2P+E

Ampère

Poles

230 V
50 / 60 Hz
3pole
6h



Part numbers



pic. 417306

16

3

417 306

10

128



pic. 500

16

3

500

1

34



pic. 210306

16

3

210 306

10

111



pic. 212306

16

3

212 306

10

113



pic. 612306

16

3

612 306 (white)

1

242

16

3

613 306 (brown)

1

242

16

3

614 306 (black)

1

242



pic. 610306

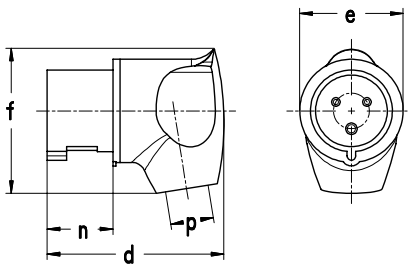
16

3

610 306

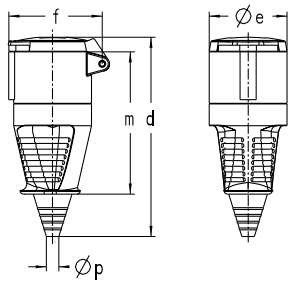
10

126



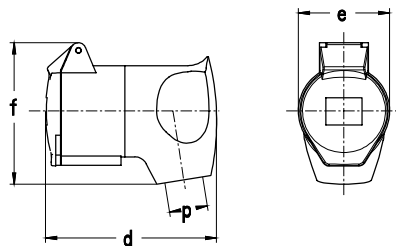
Amp.	16
Pole	3
d	85
e	50.3
f	70
n	37
p	8/15

mondo Angled plug,
back part RAL 7035 light grey,
IP 44



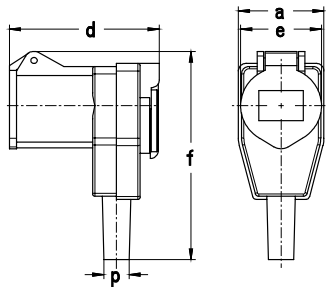
Amp.	16
Pole	3
d	154
phi_p	51
f	68
m	109
phi_p	7/13

Coupler,
with flexible cable entry,
IP 44



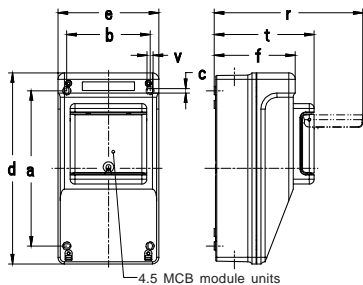
Amp.	16
Pole	3
d	95
e	50.3
f	80
p	8/13

mondo Angled coupler,
RAL 7035 light grey,
IP 44



Amp.	16
pole	3
a	54
d	87
e	49.5
f	140
phi_p	7/13

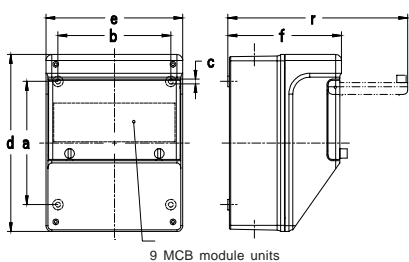
Angled coupler,
with Schuko on reverse side,
IP 44



a	192
b	103
c	5.5
d	237
e	125
f	100.5
r	185
t	124
v	7.5
M	20/25

CEEtyp combination unit
for caravans, equipped with:

- 1 enclosure 659
- 1 CEEtyp panel socket 3 x 16 A
- 1 MCB 1 pole 16 A »B«
- 1 RCD 2-pole 25 A,
 $I_{\Delta n} = 0.03 \text{ A}$



a	165
b	151
c	6.5
d	237
e	183
f	152
r	241
M	25/32

CEEtyp combination unit
for caravans, equipped with:

- 1 enclosure 692
- 2 CEEtyp panel sockets 3 x 16 A,
lockable with padlock
(please order padlock separately)
- 2 MCBs 1 pole, 16 A »B«
- 1 RCD 2-pole 25 A,
 $I_{\Delta n} = 0.03 \text{ A}$



2P+E

Ampère

Poles

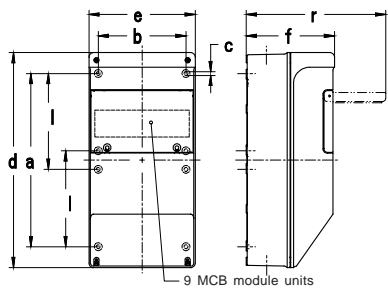
230 V
50 / 60 Hz
3pole
6h



g


Part numbers

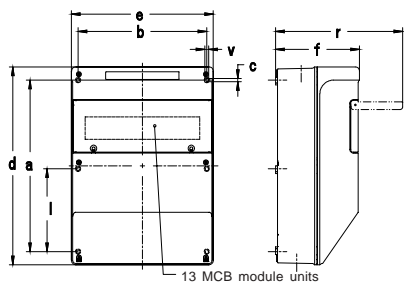
 <p><i>pic. 216306</i></p>	16	3	216 306	10	106
 <p><i>pic. 310306</i></p>	16	3	310 306	10	150
 <p><i>pic. 316306</i></p>	16	3	316 306	10	138
 <p><i>pic. 317306</i></p>	16	3	317 306	10	152
 <p><i>pic. 6591002</i></p>	16	3	659 10 02	1	1100
 <p><i>pic. 6924901</i></p>	16	3	692 49 01	1	1600



a	298
b	151
c	6.5
d	370
e	183
f	152
l	165
r	240
M	25/32


CEEtyp combination unit
for caravans, equipped with:

- 1 enclosure 698
- 4 CEEtyp panel sockets 3 x 16 A,
lockable with padlock
(please order padlock separately)
- 4 MCBs 1 pole, 16 A »B«
- 2 RCDs  2 pole 25 A,
 $I_{\Delta n} = 0.03 A$



a	350
b	263
c	6.5
d	404
e	290
f	171.5
l	169
r	260
v	8
M	32/50

CEEtyp combination unit
for caravans, equipped with:

- 1 enclosure 682
- 6 CEEtyp panel sockets 3 x 16 A,
lockable with padlock
(please order padlock separately)
- 6 MCBs 1 pole, 16 A »B«
- 2 RCDs  2 pole 25 A,
 $I_{\Delta n} = 0.03 A$



2P+E

Ampère

Poles

230 V
50 / 60 Hz
3pole
6h



Part numbers



pic. 6984902

16

3

698 49 02

1 3000



pic. 6824902

16

3

682 49 02

1 5600