

## Harsh environments IEC/EN 60 309



The contact carriers in plugs and sockets for harsh environments are made of especially **resistant glass fibre reinforced polyamide**.

The contacts are **nickel-plated**, the sleeve contacts are additionally protected by a **resin-free oil**.

The recommended application areas are:

1. With especially high air humidity
  - hothouses
  - saline environments like coastal areas
  - salt mines
  - salines

2. In chemical aggressive atmosphere

- breweries
- wine press houses
- wine cellars
- ammonious and hydrogen-sulphidic atmospheres
- agricultural plants



### Wall sockets

IP 44  
16 - 63 A p. 207

IP 67  
16 - 125 A p. 207



### Mini combinations

with Schuko socket  
+ miniature fuse system „G“  
IP 44  
16 and 32 A

p. 209



### Plugs

with flexible cable entry or  
cable gland  
IP 44 and IP 67  
16 - 125 A

p. 209



### Appliance inlets

wall mounting or flange  
IP 44 and IP 67  
16 - 125 A

p. 209-211



### Phase inverters

IP 44, 16 and 32 A

p. 211



### Couplers

with flexible cable entry or  
cable gland  
IP 44 and IP 67  
16 - 125 A

p. 211

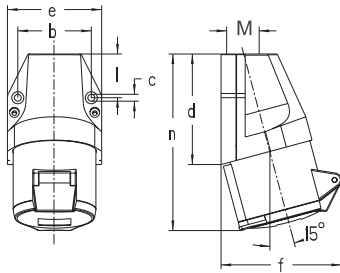


### Panel sockets

straight or angled  
IP 44 and IP 67  
16 - 125 A

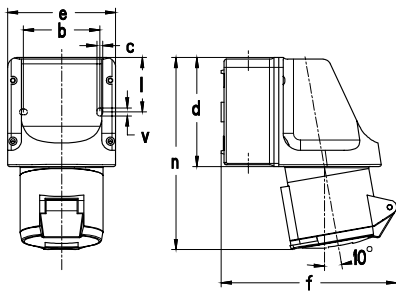
p. 213





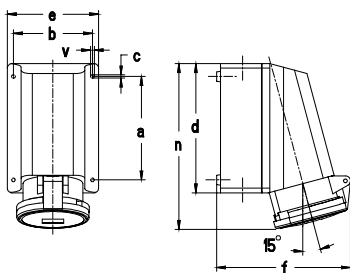
<b>Amp.</b>	16	32
<b>Pole</b>	5	5
b	60	60
c	5.3	5.3
d	80	97
e	74	82
f	90	105
l	31	45
n	129	155
M	20	25

**Wall sockets,**  
external fixing,  
1 top cable entry,  
IP 44



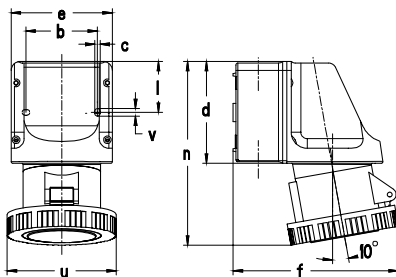
<b>Amp.</b>	16	32
<b>Pole</b>	5	5
b	66.5	66.5
c	5	5
d	96	96
e	95	95
f	146	157
l	47.5	47.5
n	164	173
v	7	7
M	20/25	20/25

**Wall sockets,**  
internal fixing,  
2 cable entries both, top and bottom,  
knock-out,  
IP 44



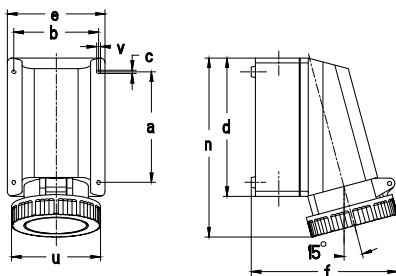
<b>Amp.</b>	63
<b>Pole</b>	5
a	136
b	104
c	4.2
d	172
e	121
f	178
n	220
v	5
M	32

**Wall sockets,**  
internal fixing,  
cable entries:  
1 x top (open),  
2 x bottom (knock-out),  
and vice versa,  
IP 44



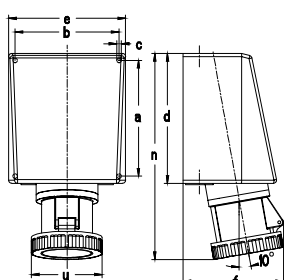
<b>Amp.</b>	16	32
<b>Pole</b>	5	5
b	66.5	66.5
c	5	5
d	96	96
e	95	95
f	147	156
l	47.5	47.5
n	164	176
u	88	103
v	7	7
M	20/25	20/25

**Wall sockets,**  
internal fixing,  
2 cable entries both, top and bottom  
(knock-out),  
IP 67



<b>Amp.</b>	63
<b>Pole</b>	5
a	136
b	104
c	4.2
d	172
e	121
f	178
n	224
u	110
v	5
M	32

**Wall sockets,**  
internal fixing,  
cable entries:  
1 x top (open),  
2 x bottom (knock-out),  
and vice versa,  
IP 67



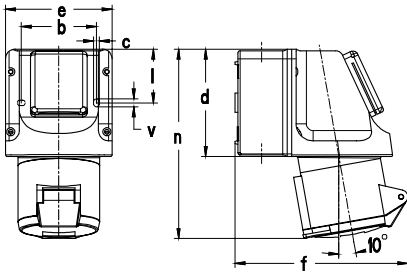
<b>Amp.</b>	125
<b>Pole</b>	5
a	240
b	200
c	7
d	263
e	220
f	190
n	406
u	130
M 1	50/20
M 2	40

**Wall sockets,**  
with multi contacts for high contact pressure  
and easy removal,  
cable entries:  
top: 1 x M 50 and 1 x M 20,  
bottom: 2 x M 40,  
with terminal block set 5 x 50 mm<sup>2</sup>,  
IP 67



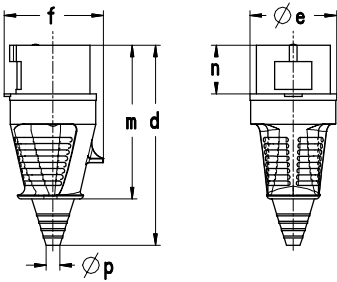
3P+N+E

	Ampère	Poles	110 V 50 u. 60 Hz		230 V 50 u. 60 Hz			400 V 50 u. 60 Hz			500 V 50 u. 60 Hz			> 50 - 500 V 100 - 300 Hz			> 50 - 500 V ü. 300 - 500 Hz				
			3pole 4h	4pole 4h	5pole 4h	3pole 6h	4pole 9h	5pole 9h	3pole 9h	4pole 6h	5pole 6h	3pole 7h	4pole 7h	5pole 7h	3pole 10h	4pole 10h	5pole 10h	3pole 2h	4pole 2h		
<b>Part numbers</b>																					
 <i>pic. 130Ni</i>	16	5																		10	232
	32	5																		10	325
 <i>pic. 131Ni</i>	16	5																		5	425
	32	5																		5	489
 <i>pic. 161Ni</i>	63	5																		2	1134
 <i>pic. 139Ni</i>	16	5																		5	480
	32	5																		5	550
 <i>pic. 169Ni</i>	63	5																		2	1163
 <i>pic. 179Ni</i>	125	5																		1	3800



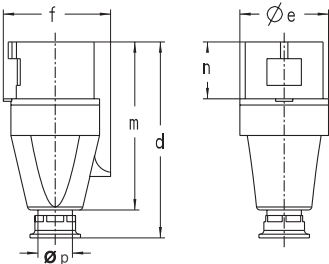
Amp.	16	32
Pole	5	5
b	66.5	66.5
c	5	5
d	96	96
e	95	95
f	146	157
l	47.5	47.5
n	164	173
v	7	7
M	20/25	20/25

**Mini combinations,**  
CEEtyp wall sockets with  
Schuko socket, 16 A, 230 V, 2P + E,  
IP 44



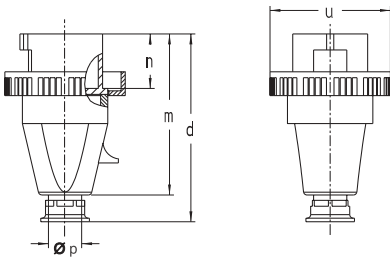
Amp.	16	32	63
Pole	5	5	5
d	153	181	252
Øe	65	72	81
f	75	88	97
m	117	138	192
n	37	46	67
Øp	8/21	11/24/1	15/33

**Plugs,**  
with flexible cable entry,  
IP 44



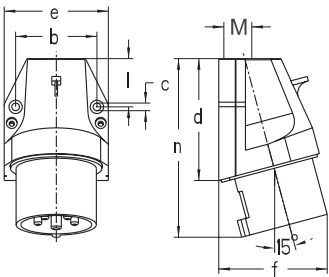
Amp.	16	32	63
Pole	5	5	5
d	131	155	240
Øe	65	73	81
f	75	88	97
m	112	133	192
n	37	46	67
Øp	7.5-12.5	10-19.5	18-34.5

**Plugs,**  
with cable gland,  
IP 44



Amp.	16	32	63	125
Pole	5	5	5	5
d	132	156	243	315
m	114	135	195	258
n	37	46	67	75.5
u	88	103	110	130
Øp	7.5-12.5	10-19.5	18-34.5	24-45

**Plugs,**  
with cable gland,  
IP 67



Part no.:  
610 Ni + 610 PH Ni  
630 Ni + 630 PH Ni

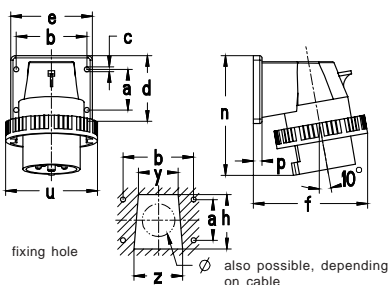
Amp.	16	32
Pole	5	5
b	60	60
c	5.3	5.3
d	80	97
e	74	82
f	73	86
l	31	45
n	117	141
M	20	25

Part no.:  
611 PH Ni  
631 PH Ni

(drawing like 611 PH and 631 PH)

Amp.	16	32
Pole	5	5
a	40	45
b	68	78
c	5.5	5.5
d	66	75
e	80	90
f	92	103
h	52	60
n	110	129
p	9.5	9.5
y	38	44
z	46	54

**Wall mounting appliance inlet,**  
external fixing,  
1 top cable entry,  
IP 44



fixing hole

also possible, depending on cable

Amp.	16	32	63
Pole	5	5	5
a	40	45	90
b	68	78	90
c	5.5	5.5	6.2
d	66	75	114
e	80	90	114
f	103	117	129
h	52	60	70
n	113	131	184
p	9.5	9.5	6
u	88	103	110
y	38	44	56
z	46	54	65

Fixing dimensions = a + b,  
Flange dimensions = d + e

**Panel mounting appliance inlet, angled,**  
flange screwed on,  
IP 67

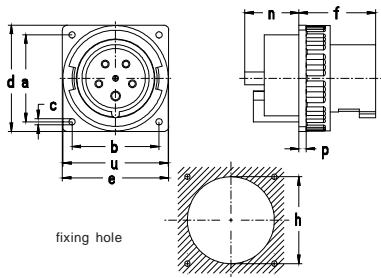


3P+N+E

Ampère	Poles	110 V 50 u. 60 Hz			230 V 50 u. 60 Hz			400 V 50 u. 60 Hz			500 V 50 u. 60 Hz			> 50 - 500 V 100 - 300 Hz			> 50 - 500 V ü. 300 - 500 Hz				
		3pole 4h	4pole 4h	5pole 4h	3pole 6h	4pole 9h	5pole 9h	3pole 9h	4pole 6h	5pole 6h	3pole 7h	4pole 7h	5pole 7h	3pole 10h	4pole 10h	5pole 10h	3pole 2h	4pole 2h	5pole 2h		

Part numbers

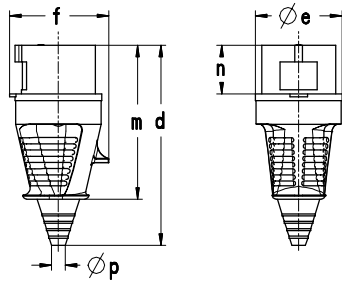
 pic. 135NI	16	5																	5	537
	32	5																	5	619
 pic. 230NI	16	5																	10	177
	32	5																	10	253
	63	5																	5	579
 pic. 231NI	16	5																	10	199
	32	5																	10	286
	63	5																	5	613
 pic. 239NI	16	5																	10	199
	32	5																	10	286
	63	5																	5	771
	125	5																	2	1473
 pic. 630NI	16	5																	10	180
	16	5																	10	180
	16	5																	10	180
	32	5																	10	261
	32	5																	10	261
	32	5																	10	261
 pic. 639NI	16	5																	10	205
	32	5																	5	295
	63	5																	5	613



<b>Amp.</b>	<b>125</b>
<b>Pole</b>	<b>5</b>
a	104
b	104
c	6,5
d	130
e	130
f	93
h	90
n	56
p	7,5
u	130

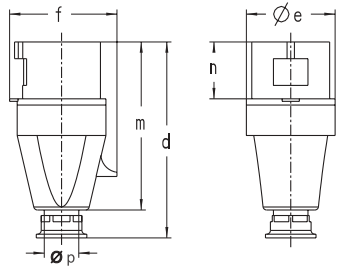
Fixing dimensions = a + b,  
Flange dimensions = d + e

**Panel mounting appliance inlet, straight,**  
flange screwed on,  
IP 67 🇩🇪



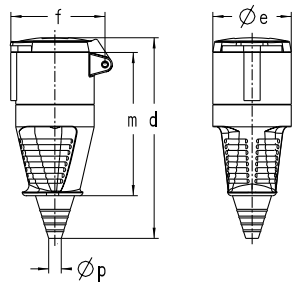
<b>Amp.</b>	<b>16</b>	<b>32</b>
<b>Pole</b>	<b>5</b>	<b>5</b>
d	153	181
Øe	65	72
f	75	88
m	117	138
n	37	46
Øp	8/21	11/24

**Phase inverters,**  
with flexible cable entry,  
IP 44 🇩🇪



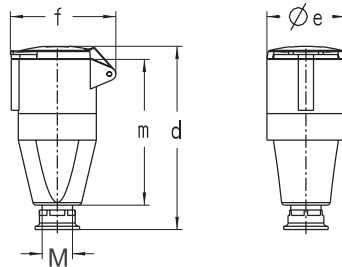
<b>Amp.</b>	<b>16</b>	<b>32</b>
<b>Pole</b>	<b>5</b>	<b>5</b>
d	131	155
Øe	65	73
f	75	88
m	112	133
n	37	46
Øp	7,5-14,5	10-19,5

**Phase inverters,**  
with cable gland,  
IP 44 🇩🇪



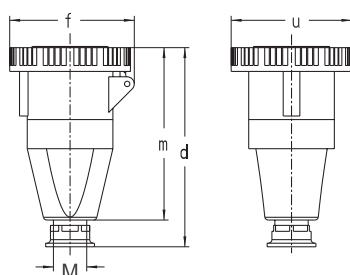
<b>Amp.</b>	<b>16</b>	<b>32</b>	<b>63</b>
<b>Pole</b>	<b>5</b>	<b>5</b>	<b>5</b>
d	167	196	266
Øe	65	72	96
f	85	98	114
m	119	141	196
Øp	8/21	11/24	15/33

**Couplers,**  
with flexible cable entry,  
IP 44 🇩🇪



<b>Amp.</b>	<b>16</b>	<b>32</b>	<b>63</b>
<b>Pole</b>	<b>5</b>	<b>5</b>	<b>5</b>
d	151	171	255
Øe	65	72	96
f	85	98	114
m	113	136	194
Øp	7,5-14,5	10-19,5	18-34,5

**Couplers,**  
with cable gland,  
IP 44 🇩🇪



<b>Amp.</b>	<b>16</b>	<b>32</b>	<b>63</b>	<b>125</b>
<b>Pole</b>	<b>5</b>	<b>5</b>	<b>5</b>	<b>5</b>
d	143	170	255	332
f	91	105	117	130
m	126	149	206	275
u	88	103	110	130
Øp	7,5-12,5	10-19,5	18-34,5	24-45

**Couplers,**  
with cable gland,  
IP 67 🇩🇪

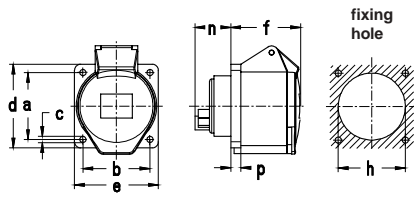


3P+N+E

Ampère	Poles	110 V 50 u. 60 Hz			230 V 50 u. 60 Hz			400 V 50 u. 60 Hz			500 V 50 u. 60 Hz			> 50 - 500 V 100 - 300 Hz			> 50 - 500 V ü. 300 - 500 Hz				
		3pole 4h	4pole 4h	5pole 4h	3pole 6h	4pole 9h	5pole 9h	3pole 9h	4pole 6h	5pole 6h	3pole 7h	4pole 7h	5pole 7h	3pole 10h	4pole 10h	5pole 10h	3pole 2h	4pole 2h	5pole 2h		

Part numbers

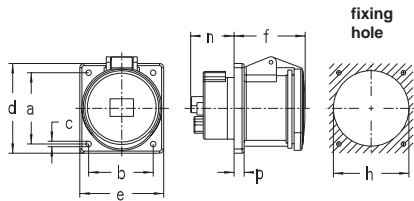
 <i>pic. 679NI</i>	125	5																	2	1147
 <i>pic. 230PHNI</i>	16	5																	10	183
	32	5																	10	264
 <i>pic. 231PHNI</i>	16	5																	10	180
	32	5																	10	257
 <i>pic. 330NI</i>	16	5																	10	228
	32	5																	10	317
	63	5																	5	782
 <i>pic. 331NI</i>	16	5																	10	214
	32	5																	10	300
	63	5																	5	787
 <i>pic. 339NI</i>	16	5																	10	255
	32	5																	10	350
	63	5																	5	849
	125	5																	2	1710



Amp.	16	32
Pole	5	5
a	60	60
b	60	60
c	5.5	5.5
d	75	75
e	75	75
f	53	65
h	60	60
n	28	27
p	9	9

Fixing dimensions = a + b,  
Flange dimensions = d + e

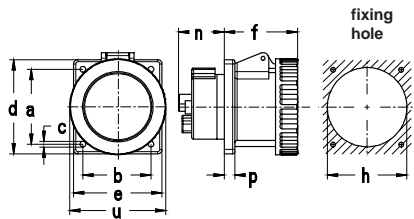
**Panel sockets, straight,**  
Flange dimensions 75 x 75 mm,  
fingerproof acc. to BGV A2,  
IP 44



Amp.	63
Pole	5
a	85
b	77
c	6.5
d	107
e	100
f	85
h	90
n	52
p	12

Fixing dimensions = a + b,  
Flange dimensions = d + e

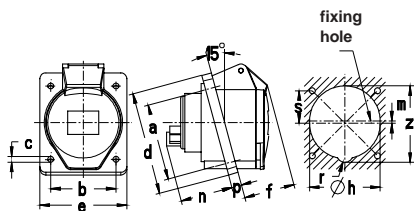
**Panel socket, straight,**  
Flange dimensions 107 x 100 mm,  
fingerproof acc. to BGV A2,  
IP 44



Amp.	16	32	63	125
Pole	5	5	5	5
a	60	60	85	90
b	60	60	77	90
c	5.5	5.5	6.5	6.5
d	75	75	107	114
e	75	75	100	114
f	52	65	83	96
h	60	60	90	90
n	28	27	52	64
p	9	9	12	12
u	88	103	110	130

Fixing dimensions = a + b,  
Flange dimensions = d + e

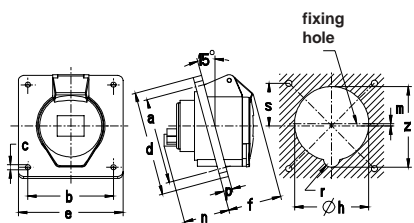
**Panel sockets, straight,**  
16 - 63 A fingerproof acc. to BGV A2,  
125 A handproof acc. to BGV A2,  
IP 67



Amp.	16	32	63
Pole	5	5	5
a	60	60	85
b	60	60	77
c	5.5	5.5	6.5
d	85	95	107
e	75	80	100
f	51	56	79
h	65	68.5	81
n	38	47	64
p	9	9	12
r	7.5	7.5	8
y	67	76	85
z	71	82	90

Fixing dimensions = a + b,  
Flange dimensions = d + e

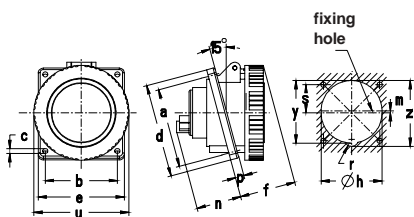
**Panel sockets, angled,**  
fingerproof acc. to BGV A2,  
IP 44



Amp.	16	32	63
Pole	5	5	5
a	90	90	90
b	90	90	90
c	5.5	5.5	6.5
d	110	110	114
e	110	110	114
f	51	56	79
h	73	73	81
n	38	47	64
p	9	9	12
r	7.5	7.5	8
y	80	80	85
z	82	85	90

Fixing dimensions = a + b,  
Flange dimensions = d + e

**Panel sockets, angled,**  
16 - 63 A fingerproof acc. to BGV A2,  
IP 44



Amp.	16	32	63	125
Pole	5	5	5	5
a	85	85	85	90
b	77	77	77	90
c	5.5	5.5	6.5	6.5
d	100	100	107	114
e	92	92	100	114
f	52	60	82	94
h	73	73	81	90
n	38	47	64	75
p	9	9	12	12
r	7.5	7.5	8	8
u	88	103	110	130
y	76	76	85	96
z	82	82	90	102

Fixing dimensions = a + b,  
Flange dimensions = d + e

**Panel sockets, angled,**  
16 - 63 A fingerproof acc. to BGV A2,  
125 A handproof acc. to BGV A2,  
IP 67



3P+N+E

Ampère	Poles	110 V 50 u. 60 Hz			230 V 50 u. 60 Hz			400 V 50 u. 60 Hz			500 V 50 u. 60 Hz			> 50 - 500 V 100 - 300 Hz			> 50 - 500 V ü. 300 - 500 Hz				
		3pole 4h	4pole 4h	5pole 4h	3pole 6h	4pole 9h	5pole 9h	3pole 9h	4pole 6h	5pole 6h	3pole 7h	4pole 7h	5pole 7h	3pole 10h	4pole 10h	5pole 10h	3pole 2h	4pole 2h	5pole 2h		

Part numbers

 pic. 430NI	16	5																	10	165
	32	5																	10	226
 pic. 460NI	63	5																	5	776
 pic. 439NI	16	5																	10	202
	32	5																	10	278
	63	5																	5	799
	125	5																	2	1319
 pic. 530NI	16	5																	10	175
	32	5																	10	240
	63	5																	5	708
 pic. 532NI	16	5																	10	198
	32	5																	10	259
	63	5																	5	715
 pic. 539NI	16	5																	10	223
	32	5																	10	303
	63	5																	5	832
	125	5																	2	1316