

# ATB8 MONOBLOC CABINET

## ATB8



finishing profile

frame, roof and sidewall  
are one integral piece

removable back

mounting plate included in the supply

closing system with:

- 3 points for H=1600,
- 4 points for H=1800-2000,

with possibility to mount different inserts

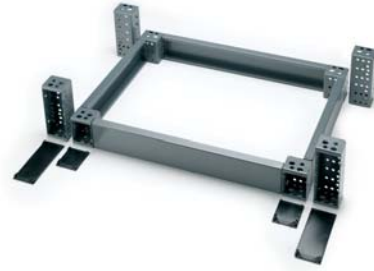
innovative cable-entry floor using modular  
cable conduit plates (double cable entry  
for enclosures larger than 1200)  
easy-to-assemble modular plinth ATZE  
(dedicated crosspieces)



from left:

- detail of cable entry plates
- detail of double cable entry
- detail of mounting plate sliding mechanism

MAIN ACCESSORIES



DIMENSIONS  
W X H X D

CABINET  
WITH BLANK DOOR  
(1)

CABINET  
WITH GLAZED DOOR  
(2)

UNIVERSAL  
CORNER PIECES H=100

PLINTH H=100

FRONT CROSSPIECES

SIDE CROSSPIECES

DIMENSIONS W X H X D	CABINET WITH BLANK DOOR (1)	CABINET WITH GLAZED DOOR (2)	UNIVERSAL CORNER PIECES H=100	PLINTH H=100 FRONT CROSSPIECES	SIDE CROSSPIECES
600 X 1600 X 400	ATB8061604PR	ATB8061604PX	ATZE-A100	ATZE-T0600	ATZE-T0400B
600 X 1800 X 400	ATB8061804PR	ATB8061804PX	ATZE-A100	ATZE-T0600	ATZE-T0400B
600 X 1800 X 500	ATB8061805PR	ATB8061805PX	ATZE-A100	ATZE-T0600	ATZE-T0500B
600 X 2000 X 400	ATB8062004PR	ATB8062004PX	ATZE-A100	ATZE-T0600	ATZE-T0400B
600 X 2000 X 500	ATB8062005PR	ATB8062005PX	ATZE-A100	ATZE-T0600	ATZE-T0500B
800 X 1600 X 400	ATB8081604PR	ATB8081604PX	ATZE-A100	ATZE-T0800	ATZE-T0400B
800 X 1800 X 400	ATB8081804PR	ATB8081804PX	ATZE-A100	ATZE-T0800	ATZE-T0400B
800 X 1800 X 500	ATB8081805PR	ATB8081805PX	ATZE-A100	ATZE-T0800	ATZE-T0500B
800 X 2000 X 400	ATB8082004PR	ATB8082004PX	ATZE-A100	ATZE-T0800	ATZE-T0400B
800 X 2000 X 500	ATB8082005PR	ATB8082005PX	ATZE-A100	ATZE-T0800	ATZE-T0500B
1000 X 1600 X 400	ATB8101604PR	ATB8101604PX	ATZE-A100	ATZE-T1000	ATZE-T0400B
1000 X 1800 X 400	ATB8101804PR	ATB8101804PX	ATZE-A100	ATZE-T1000	ATZE-T0400B
1000 X 1800 X 500	ATB8101805PR	ATB8101805PX	ATZE-A100	ATZE-T1000	ATZE-T0500B
1000 X 2000 X 400	ATB8102004PR	ATB8102004PX	ATZE-A100	ATZE-T1000	ATZE-T0400B
1000 X 2000 X 500	ATB8102005PR	ATB8102005PX	ATZE-A100	ATZE-T1000	ATZE-T0500B
1200 X 800 X 400	ATB8120804PR*		ATZE-A100	ATZE-T1200	ATZE-T0400B
1200 X 1000 X 400	ATB8121004PR*		ATZE-A100	ATZE-T1200	ATZE-T0400B
1200 X 1600 X 400	ATB8121604PR		ATZE-A100	ATZE-T1200	ATZE-T0400B
1200 X 1800 X 400	ATB8121804PR		ATZE-A100	ATZE-T1200	ATZE-T0400B
1200 X 1800 X 500	ATB8121805PR		ATZE-A100	ATZE-T1200	ATZE-T0500B
1200 X 2000 X 400	ATB8122004PR		ATZE-A100	ATZE-T1200	ATZE-T0400B
1200 X 2000 X 500	ATB8122005PR		ATZE-A100	ATZE-T1200	ATZE-T0500B
1400 X 1000 X 400	ATB8141004PR*		ATZE-A100	ATZE-T1400	ATZE-T0400B
1600 X 1000 X 400	ATB8161004PR*		ATZE-A100	ATZE-T1600	ATZE-T0400B
1600 X 1800 X 400	ATB8161804PR		ATZE-A100	ATZE-T1600	ATZE-T0400B
1600 X 2000 X 400	ATB8162004PR		ATZE-A100	ATZE-T1600	ATZE-T0400B
1800 X 1000 X 400	ATB8181004PR*		ATZE-A100	ATZE-T1800	ATZE-T0400B

(1) supply includes fully welded frame with removable rear panel, blank door and ATPA mounting plate. To be ordered separately plinth and eyebolts WTGS-003

(2) supply includes fully welded frame with removable rear panel, glazed door and ATPA mounting plate. To be ordered separately plinth and eyebolts WTGS-003

(\*) ATB8 for widths up to 1800mm

# ATB8 CABINET WITH SINGLE DOOR

## ATB8



### MAIN ACCESSORIES



ATZE modular plinth (see page 86)



eyebolts (see page 87)

### CHARACTERISTICS

#### - STRUCTURE

Cabinet structure manufactured from 15/10 sheet steel with removable rear panel.

Door manufactured from 20/10 sheet steel with door stiffening frame.

#### PAINT FINISH

ETA standard epoxy polyester powder coating.

Colour: RAL 7035 textured finish.

#### DELIVERY

- cabinet structure
- door complete with Ø 3mm double bar locking system
- adjustable cable entry
- mounting plate manufactured from 25/10 sendzimir sheet steel (for ATB8 W=1000, mounting plate manufactured from 30/10 sendzimir sheet steel)

#### CONFORMITY AND APPROVAL

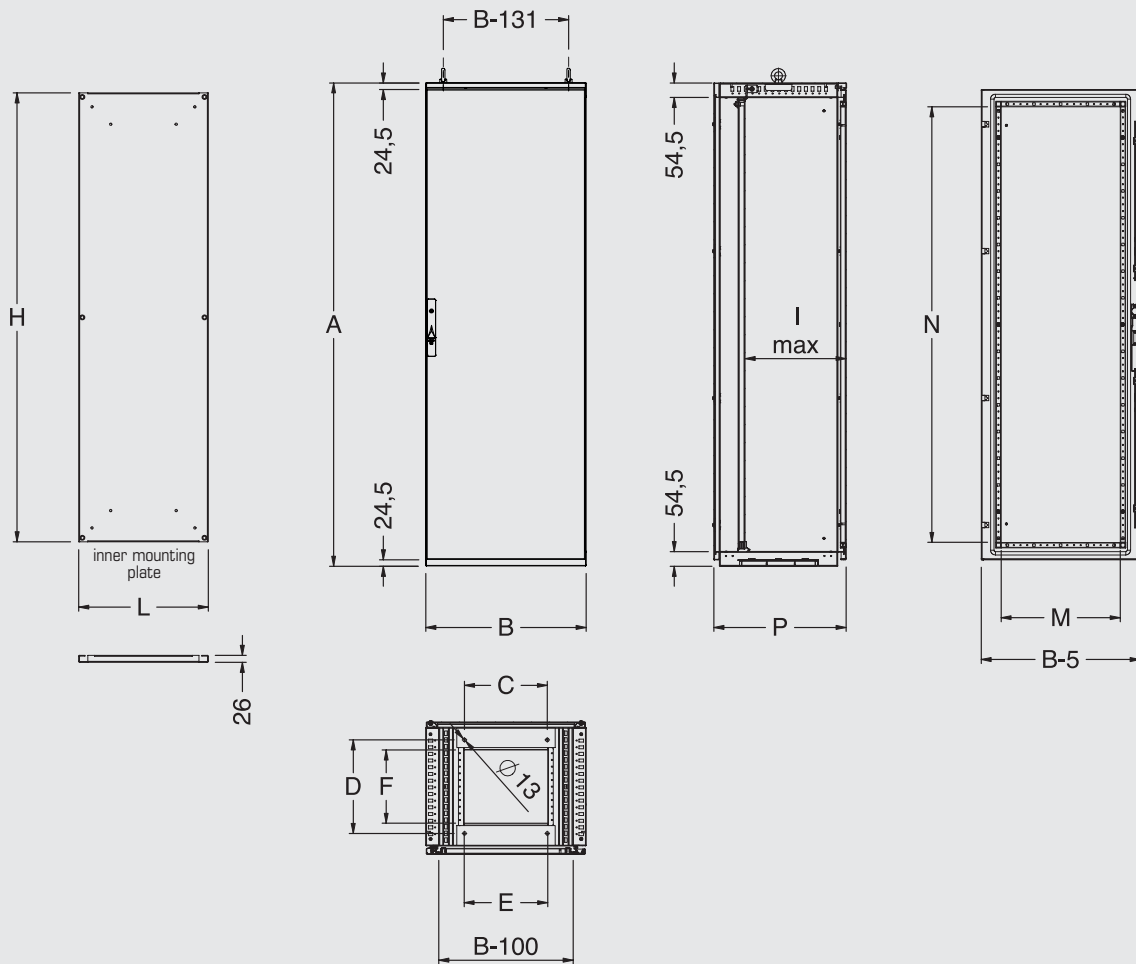


RINA

#### PROTECTION RATINGS

- IP 66 complying with IEC EN62208; EN60529
- NEMA 12 complying with UL508A; UL50
- protection degree guaranteed by the two-component polyurethane foam seal (for technical details, refer to page 260)
- impact resistance IK10 complying with IEC EN62208; EN50102.

Note: to order an ATPA mounting plate (as a spare part), check on page 36.



### DIMENSIONAL SPECIFICATIONS

DIMENSIONS			CABINET DIMENSIONS			FLOOR FIXING		CABLE ENTRY		DOOR SPACE		MOUNTING PLATE DIM.		
WIDTH	HEIGHT	DEPTH	B	A	P	C	D	E	F	M	N	L	H	I
600	1600	400	600	1609	395	310	250	313	174	445	1430	485	1480	350
600	1800	400	600	1809	395	310	250	313	174	445	1630	485	1680	350
600	1800	500	600	1809	495	310	350	313	274	445	1630	485	1680	450
600	2000	400	600	2009	395	310	250	313	174	445	1830	485	1880	350
600	2000	500	600	2009	495	310	350	313	274	445	1830	485	1880	450
800	1600	400	800	1609	395	510	250	513	174	645	1430	685	1480	350
800	1800	400	800	1809	395	510	250	513	174	645	1630	685	1680	350
800	1800	500	800	1809	495	510	350	513	274	645	1630	685	1680	450
800	2000	400	800	2009	395	510	250	513	174	645	1830	685	1880	350
800	2000	500	800	2009	495	510	350	513	274	645	1830	685	1880	450
1000	1600	400	1000	1609	395	710	250	713	174	845	1430	885	1480	350
1000	1800	400	1000	1809	395	710	250	713	174	845	1630	885	1680	350
1000	1800	500	1000	1809	495	710	350	713	274	845	1630	885	1680	450
1000	2000	400	1000	2009	395	710	250	713	174	845	1830	885	1880	350
1000	2000	500	1000	2009	495	710	350	713	274	845	1830	885	1880	450

## ATB8 600 WIDE

## CABINET CODES

CABINET DIMENSIONS			CABINET WITH BLANK DOOR	CABINET WITH GLAZED DOOR
WIDTH	HEIGHT	DEPTH		
600	1600	400	ATB8061604PR	ATB8061604PX
600	1800	400	ATB8061804PR	ATB8061804PX
600	1800	500	ATB8061805PR	ATB8061805PX
600	2000	400	ATB8062004PR	ATB8062004PX
600	2000	500	ATB8062005PR	ATB8062005PX

Note: if an inner door is needed, please check the code ATPI on page 43.

## ATB8 800 WIDE

## CABINET CODES

CABINET DIMENSIONS			CABINET WITH BLANK DOOR	CABINET WITH GLAZED DOOR
WIDTH	HEIGHT	DEPTH		
800	1600	400	ATB8081604PR	ATB8081604PX
800	1800	400	ATB8081804PR	ATB8081804PX
800	1800	500	ATB8081805PR	ATB8081805PX
800	2000	400	ATB8082004PR	ATB8082004PX
800	2000	500	ATB8082005PR	ATB8082005PX

Note: if an inner door is needed, please check the code ATPI on page 43.

## ATB8 1000 WIDE

## CABINET CODES

CABINET DIMENSIONS			CABINET WITH BLANK DOOR	CABINET WITH GLAZED DOOR
WIDTH	HEIGHT	DEPTH		
1000	1600	400	ATB8101604PR	ATB8101604PX
1000	1800	400	ATB8101804PR	ATB8101804PX
1000	1800	500	ATB8101805PR	ATB8101805PX
1000	2000	400	ATB8102004PR	ATB8102004PX
1000	2000	500	ATB8102005PR	ATB8102005PX

Note: if an inner door is needed, please check the code ATPI on page 43.

# ATB8 CABINET WITH DOUBLE DOOR

## ATB8



### MAIN ACCESSORIES



ATZE modular plinth (see page 86)



eyebolts (see page 87)

### CHARACTERISTICS

#### - STRUCTURE

Cabinet structure manufactured from 15/10 sheet steel with removable rear panel.  
Door manufactured from 20/10 sheet steel with door stiffening frame.

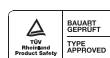
#### PAINT FINISH

ETA standard epoxy polyester powder coating.  
Colour: RAL 7035 textured finish.

#### DELIVERY

- cabinet structure
- door complete with Ø 3mm double bar locking system
- adjustable cable entry.
- mounting plate manufactured from 30/10 sendzimir sheet steel

#### CONFORMITY AND APPROVAL

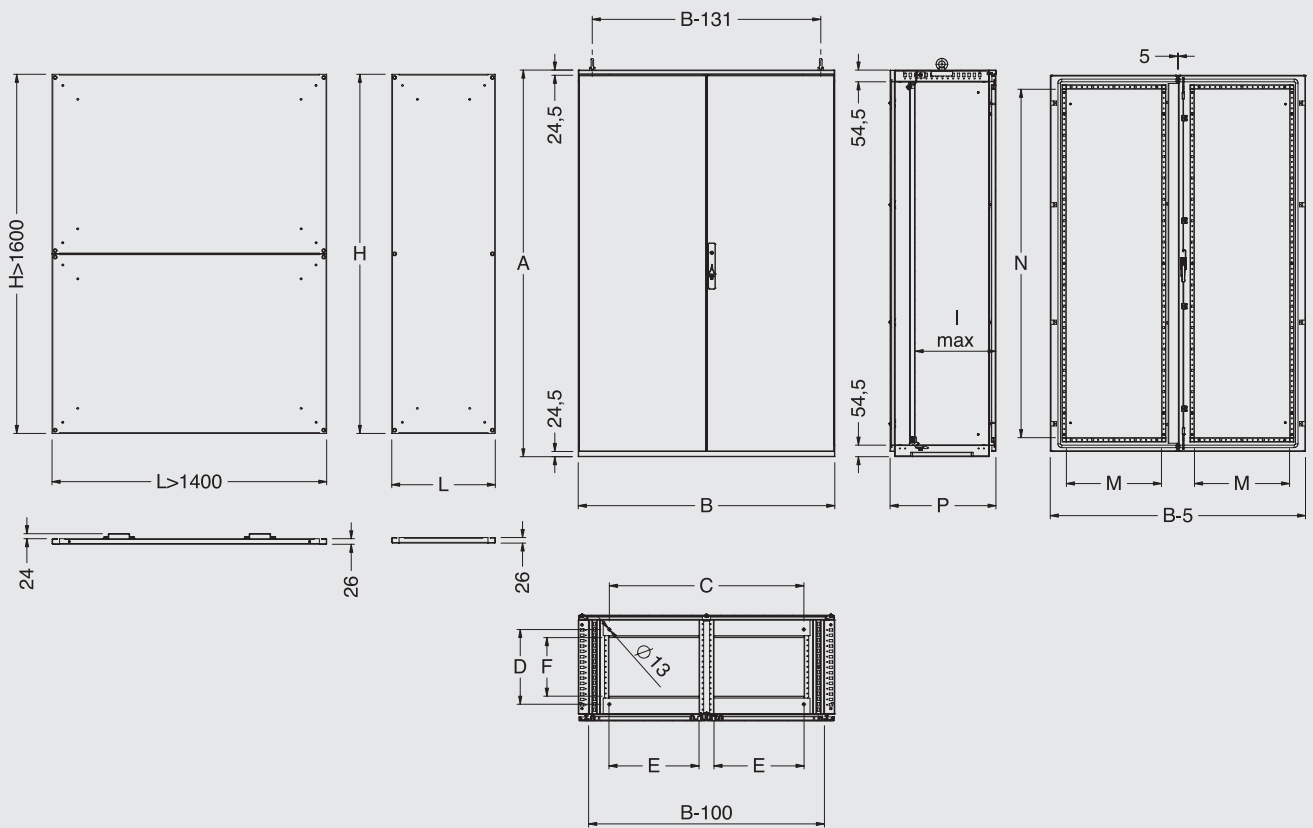


RINA

#### PROTECTION RATINGS

- IP 55 complying with IEC EN62208; EN60529
- NEMA 12 complying with UL508A; UL50
- protection degree guaranteed by the two-component polyurethane foam seal (for technical details, refer to page 260)
- impact resistance IK10 complying with IEC EN62208; EN50102.

Note: to order an ATPA mounting plate (as a spare part), check on page 36.



DIMENSIONAL SPECIFICATIONS

DIMENSIONS			CABINET DIMENSIONS			FLOOR FIXING		CABLE ENTRY		DOOR SPACE		MOUNTING PLATE DIM.		
WIDTH	HEIGHT	DEPTH	B	A	P	C	D	E	F	M	N	L	H	I
1200	1600	400	1200	1609	395	910	250	421	174	445	1430	1085	1480	350
1200	1800	400	1200	1809	395	910	250	421	174	445	1630	1085	1680	350
1200	1800	500	1200	1809	495	910	350	421	274	445	1630	1085	1680	450
1200	2000	400	1200	2009	395	910	250	421	174	445	1830	1085	1880	350
1200	2000	500	1200	2009	495	910	350	421	274	445	1830	1085	1880	450
1600	1800	400	1600	1809	395	1310	250	621	174	645	1630	1485	1680	350
1600	2000	400	1600	2009	395	1310	250	621	174	645	1830	1485	1880	350

## ATB8 1200 WIDE

### CABINET CODES

CABINET DIMENSIONS			CABINET WITH BLANK DOOR
WIDTH	HEIGHT	DEPTH	
1200	1600	400	ATB8121604PR
1200	1800	400	ATB8121804PR
1200	1800	500	ATB8121805PR
1200	2000	400	ATB8122004PR
1200	2000	500	ATB8122005PR

## ATB8 1600 WIDE

### CABINET CODES

CABINET DIMENSIONS			CABINET WITH BLANK DOOR
WIDTH	HEIGHT	DEPTH	
1600	1800	400	ATB8161804PR
1600	2000	400	ATB8162004PR

## ATB8 HORIZONTAL VERSION



### MAIN ACCESSORIES



ATZE modular plinth (see page 86)



eyebolts (see page 87)

### CHARACTERISTICS

#### - STRUCTURE

Cabinet structure manufactured from 15/10 sheet steel with removable rear panel.

Door manufactured from 20/10 sheet steel with stiffening profiles.

#### PAINT FINISH

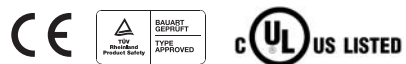
ETA standard epoxy polyester powder coating.

Colour: RAL 7035 textured finish.

#### DELIVERY

- cabinet structure
- door complete with Ø 3mm double bar locking system
- adjustable cable entry
- mounting plate manufactured from 30/10 sendzimir sheet steel.

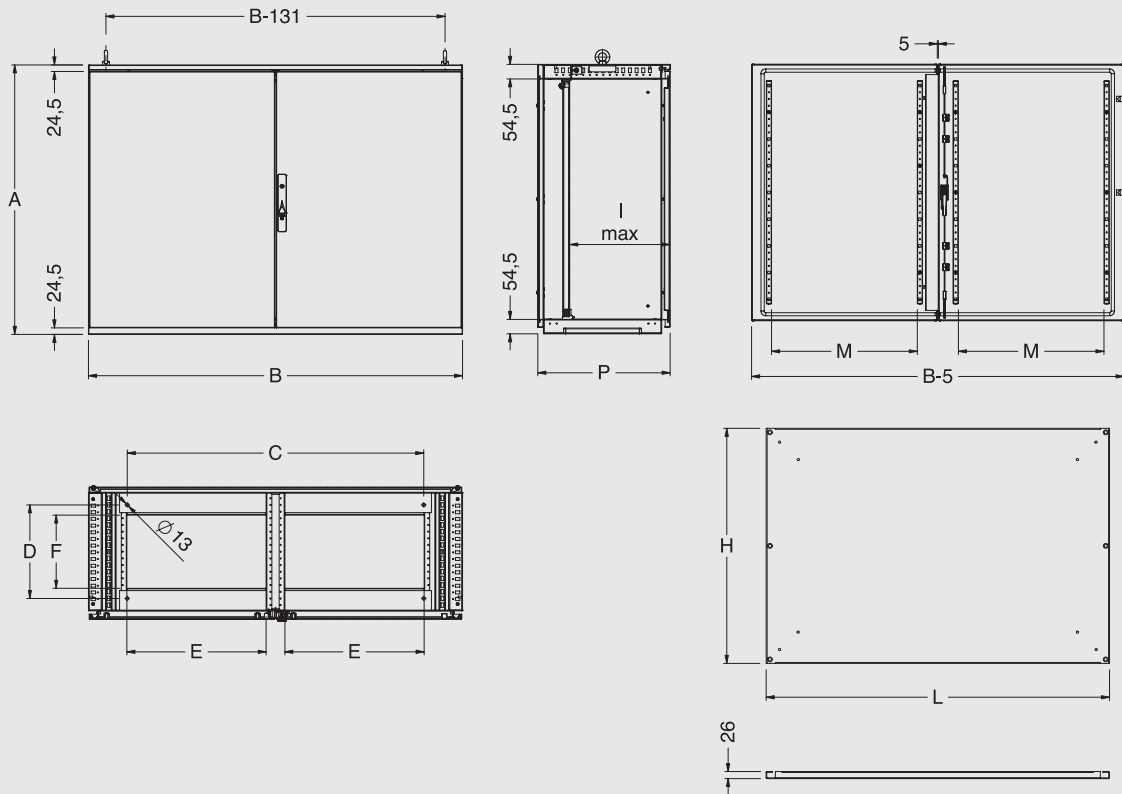
#### CONFORMITY AND APPROVAL



#### PROTECTION RATINGS

- IP 55 complying with IEC EN62208; EN60529
- NEMA 12 complying with UL508A; UL50
- protection degree guaranteed by the two-component polyurethane foam seal (for technical details, refer to page 260)
- impact resistance IK10 complying with IEC EN62208; EN50102.

Note: to order an ATPA mounting plate (as a spare part), check on page 85.



DIMENSIONAL SPECIFICATIONS

DIMENSIONS			CABINET DIMENSIONS			FLOOR FIXING		CABLE ENTRY		DOOR SPACE		MOUNTING PLATE DIM.	
WIDTH	HEIGHT	DEPTH	B	A	P	C	D	E	F	M	L	H	I (max)
1200	800	400	1200	809	395	910	250	420	174	445	1085	680	350
1200	1000	400	1200	1009	395	910	250	420	174	445	1085	880	350
1400	1000	400	1400	1009	395	1110	250	520	174	545	1285	880	350
1600	1000	400	1600	1009	395	1310	250	620	174	645	1485	880	350
1800	1000	400	1800	1009	395	1510	250	720	174	745	1685	880	350

CABINET CODES

CABINET DIMENSIONS			CABINET WITH BLANK DOOR
WIDTH	HEIGHT	DEPTH	
1200	800	400	ATB8120804PR
1200	1000	400	ATB8121004PR
1400	1000	400	ATB8141004PR
1600	1000	400	ATB8161004PR
1800	1000	400	ATB8181004PR

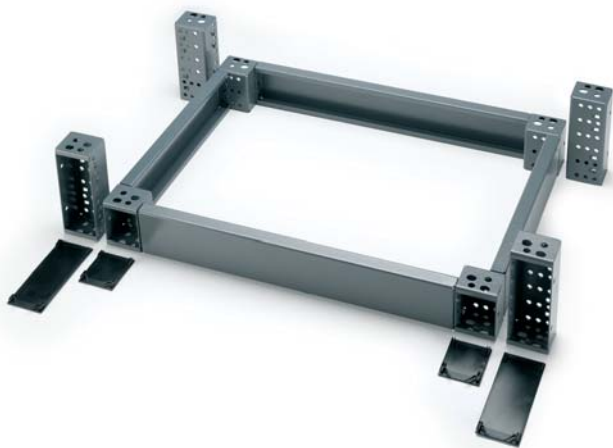
To replace the mounting plate ATPA, use the codes listed below.

FRONT INSERTED MOUNTING PLATE (SPARE PART)

ATPA CODE	CABINET DIM.			MOUNTING PLATE DIM.		
	B	A	P	L	H	I (max)
ATPA-120080	1200	809	395	1085	680	350
ATPA-120100	1200	1009	395	1085	880	350
ATPA-140100	1400	1009	395	1285	880	350
ATPA-160100	1600	1009	395	1485	880	350
ATPA-180100	1800	1009	395	1685	880	350

# ATB8 COMPLEMENTARY ACCESSORIES

## ATB8



### MODULAR PLINTH ATZE

#### CHARACTERISTICS

Corner pieces manufactured from 25/10 sheet steel, with PVC front covers caps.

Front and side crosspieces manufactured from 20/10 press bent sheet steel.

#### PAINT FINISH

ETA standard epoxy polyester powder coating.

Colour: RAL 7025 textured finish

#### DELIVERY

The modular plinth is made up of

- corner pieces: supply includes 4 pieces complete with front covers and mounting hardware
- front crosspieces: supply includes 2 pieces
- side crosspieces: supply includes 2 pieces

### UNIVERSAL CORNER PIECES

ATZE CODE	DESCRIPTION
ATZE-A100	CORNER PIECES FOR PLINTH H=100
ATZE-A200	CORNER PIECES FOR PLINTH H=200

Supply includes 4 pieces with mounting accessories.

### SIDE CROSSPIECES FOR MONOBLOC ATB8

ATZE CODE	DESCRIPTION	CROSS. L (mm)
ATZE-T0400B	SIDE CROSSPIECES FOR PLINTH D=400	206
ATZE-T0500B	SIDE CROSSPIECES FOR PLINTH D=500	306

Supply includes 2 pieces.

To order the side crosspieces H=200, add the suffix "D" to the code. I.E.: ATZE-T0400BD.

### UNIVERSAL FRONT CROSSPIECES

ATZE CODE	DESCRIPTION	CROSS. LENGTH (mm)
ATZE-T0600	FRONT CROSS. FOR PLINTH W=600	444
ATZE-T0800	FRONT CROSS. FOR PLINTH W=800	644
ATZE-T1000	FRONT CROSS. FOR PLINTH W=1000	844
ATZE-T1200	FRONT CROSS. FOR PLINTH W=1200	1044
ATZE-T1400	FRONT CROSS. FOR PLINTH W=1400	1244
ATZE-T1600	FRONT CROSS. FOR PLINTH W=1600	1444
ATZE-T1800	FRONT CROSS. FOR PLINTH W=1800	1644

Supply includes 2 pieces.

To order the front crosspieces H=200, add the suffix "D" to the code. I.E.: ATZE-T0600D.

**Note: for more information, assembly drawings and dimensional features, please check on page 217.**



### LOCKING SYSTEM WE

To order locking systems different from the standard one, check on page 67.

**CABLE ENTRY FOAM AND BOTTOM PLATE GASKET EGPT**

The bottom of the enclosure is sealed by the use of a gasket on the cable entry section of the bottom plates, guaranteeing a proper IP protection degree. To be mounted on ATB8 cable entry bottom.

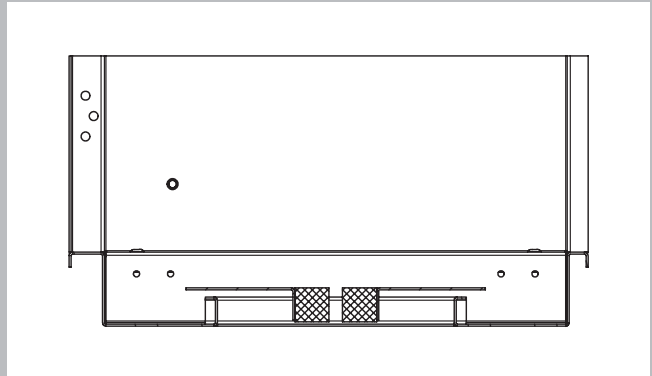
**CHARACTERISTICS**

Gland plates manufactured from zinc sheet steel and provided with adhesive closed-cell gasket.

**DELIVERY**

Supply includes nr. 2 pieces with mounting accessories.

Available on request.



**DRAWING DESK WTRL**

The desk provides a stable surface for documents, computer or measuring devices; it can be easily folded and locked within the door frame space. To be mounted directly onto the stiffening frame of ATB8 blank doors.

**CHARACTERISTICS**

Manufactured from 15/10 sheet steel.

**PAINT FINISH**

ETA standard epoxy polyester powder coating. Colour: RAL 7035 textured finish.

**DELIVERY**

Supply includes nr. 1 piece with mounting accessories.

DRAWING DESK WTRL	
WTRL CODE	CABINET DIMENSIONS
WTRL000600	600
WTRL000800	800



**WTGS-003**

Zincpassivated M12 lifting eyebolts.

**DELIVERY**

Supply includes nr. 2 pieces with nuts and washers.

**MICROSWITCH WI100ATB8**

Complying with standards IEC 337-VDE 0660.

**DELIVERY**

Supply includes: microswitch, mounting bracket and screws.

**CONFORMITY AND APPROVAL**

