

ARETA/E.GO COMMON ACCESSORIES



CABLE ENTRY MODULE SIDE OPENING ATRP

To be positioned at the end of a cabinet suite for protecting cable and connector systems. Lateral access.

CHARACTERISTICS/DELIVERY

Structure manufactured from 15/10 press bent and welded sheet steel.

Door manufactured from 20/10 sheet steel with 110° door opening. - sealing gasket.

PAINT FINISH

ETA standard epoxy polyester powder coating.
Colour: RAL 7035 textured finish.

PROTECTION RATINGS

IP 55.



CABLE ENTRY MODULE SIDE OPENING W=200

ATRP CODE	L	DIMENSIONS	
		A	P
ATRP021805	200	1809	512
ATRP022006	200	2009	612

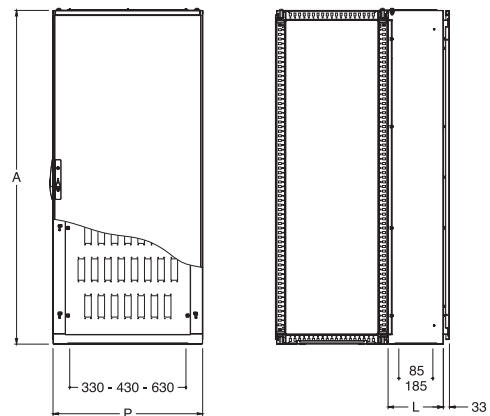
Plinth: please order part number in accordance with the total width of standard cabinet + cable entry module (i.e. Areta/E.go W 800 x D 500 + cable entry module W 200 x D 500 + plinth H=100 = ATZE-A100 + ATZE-T1000 + ATZE-T0500 (for plinth dimensions, please check on page 217)

To be ordered separately:
- ATKU-007 when joining ATRP with Areta
- EGKU-007 when joining ATRP with E.go

CABLE ENTRY MODULE SIDE OPENING W=300

ATRP CODE	L	MODULE DIMENSIONS	
		A	P
ATRP031805	300	1809	512
ATRP031806	300	1809	612
ATRP031808	300	1809	812
ATRP032005	300	2009	512
ATRP032006	300	2009	612
ATRP032008	300	2009	812

Plinth: For Areta/E.go page 217 (i.e. ATZE-A100 + ATZE-T0300 + ATZE-T0500)



INNER BLANK MOUNTING PLATE*

ATD3 CODE	MODULE DIMENSIONS	
	A	P
ATD3-050180	1809	512
ATD3-060180	1809	612
ATD3-080180	1809	812
ATD3-050200	2009	512
ATD3-060200	2009	612
ATD3-080200	2009	812

INNER PUNCHED MOUNTING PLATE*

ATD4 CODE	MODULE DIMENSIONS		NUMBER OF HOLES
	A	P	
ATD4-050180	1809	512	28
ATD4-060180	1809	612	44
ATD4-080180	1809	812	60
ATD4-050200	2009	512	32
ATD4-060200	2009	612	50
ATD4-080200	2009	812	68

*Supply includes sealing gasket for IP55

*Supply includes sealing gasket for IP55

180° DOOR HINGES WTCE

Hinges for 180° opening to be mounted on standard doors, complete with mounting accessories.

CHARACTERISTICS

Manufactured from pressed zama.

DELIVERY

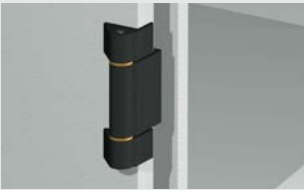
WTCE-180001 supply includes nr. 4 pieces

WTCE-180002 supply includes nr. 5 pieces

WTCE-180003 supply includes nr. 3 pieces

180° HINGES

WTCE CODE	DOOR HEIGHT
WTCE-180001	1800-2000
WTCE-180002	2200
WTCE-180003	1400-1600



To assemble on E.go cabinet, WTPE-060 has to be ordered separately



PARTIAL MOUNTING PLATE ATPR

Partial mounting plates can be manufactured upon request.

Manufactured from 25/10 sendzimir sheet steel

Mounting kit pos. A

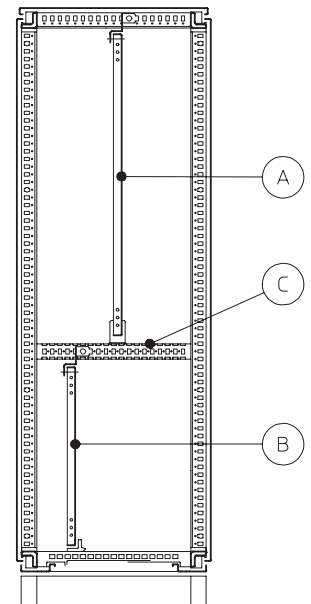
Mounting kit pos. B

To be ordered separately WTPR rails H=50mm (C) and brackets WTSP-001 (see page 55).

PARTIAL MOUNTING PLATE

ATPR CODE	MOUNTING PLATE DIMENSIONS	
	WIDTH	HEIGHT
ATPR-060060	485	600
ATPR-060080	485	800
ATPR-060120	485	1200
ATPR-080060	685	600
ATPR-080080	685	800
ATPR-080120	685	1200

For the correct use and handling of the mounting plates, it is suggested to wear proper gloves (complying with the art. 41-42-43 of the decree 626/94).



WTKA-001 - ARETA/E.GO

Mounting kit pos. A.



WTKB-002 - ARETA/E.GO

Mounting kit pos. B.



RAIL H=50MM WTPR

A unique easy mounted rail is used for all applications (horizontal, lateral and vertical mounting).

CHARACTERISTICS

Manufactured from 15/10 sendzimir sheet steel with holes at 25mm. To be assembled to the structure with fixing brackets for rails WTSF-001.

DELIVERY

Supply includes nr. 4 pieces.



FIXING BRACKETS FOR RAILS WTSF-001

CHARACTERISTICS

Manufactured from 25/10 zincpassivated sheet steel.

DELIVERY

Supply includes nr. 8 pieces with mounting accessories.



FAST FIXING BRACKETS WTPR- R

A cost effective solution allowing rapid fixing and professional result.

CHARACTERISTICS

Manufactured from 20/10 sendzimir sheet steel.

DELIVERY

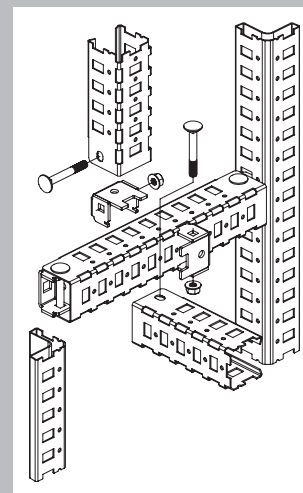
Supply includes nr. 4 pieces. To be ordered separately the zincpassivated self-tapping screws ø 5,5x13 WA218 (packaging includes 50 pieces).



WTPR RAILS H=50mm

WTPR CODE	CABINET DIM.	RAIL LENGTH
WTPR-050040	400	300
WTPR-050050	500	400
WTPR-050060	600	500
WTPR-050080	800	700
WTPR-050100	1000	900
WTPR-050120	1200	1100
WTPR-050140	1400	1300
WTPR-050160	1600	1500
WTPR-050180	1800	1700
WTPR-050200	2000	1900
WTPR-050220	2200	2100

To be ordered separately: fixing brackets WTSF-001.



WTPR - R RAILS H=25

WTPR CODE	CABINET DIMENSIONS
WTPR-025040R	400
WTPR-025050R	500
WTPR-025060R	600
WTPR-025080R	800
WTPR-025100R	1000

WTPR - R RAILS H=50

WTPR CODE	CABINET DIMENSIONS
WTPR-050040R	400
WTPR-050050R	500
WTPR-050060R	600
WTPR-050080R	800
WTPR-050100R	1000

BLANK VERTICAL DIVIDING PANEL ATD1

Manufactured from 15/10 sendzimir sheet steel then folded on the sides. To be used to separate two cabinets.

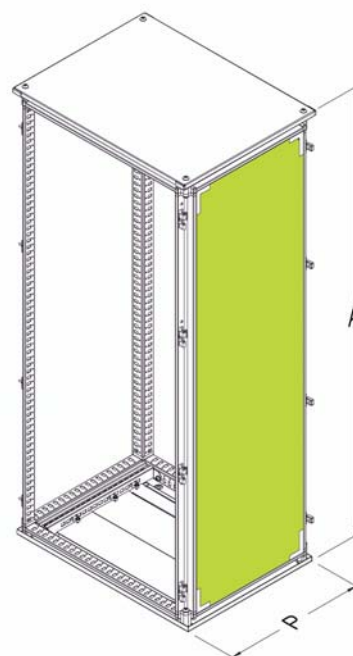
DELIVERY

Supply includes nr. 1 piece complete with mounting accessories.

BLANK VERTICAL DIVIDING PANEL ATD1

ATD1 CODE	CABINET DIMENSIONS	
	P	A
ATD1-040140	414	1409
ATD1-040160	414	1609
ATD1-040180	414	1809
ATD1-040200	414	2009
ATD1-050140	514	1409
ATD1-050160	514	1609
ATD1-050180	514	1809
ATD1-050200	514	2009
ATD1-050220	514	2209
ATD1-060160	614	1609
ATD1-060180	614	1809
ATD1-060200	614	2009
ATD1-060220	614	2209
ATD1-080180	814	1809
ATD1-080200	814	2009
ATD1-080220	814	2209

Note: when we have 2 cabinets joined together + ATD1, the protection degree inside the cabinet is IP 2X.



PUNCHED PARTITION PANEL ATD2

ATD2 CODE	CABINET DIMENSIONS		NR. HOLES
	P	A	
ATD2-050180	514	1809	36
ATD2-050200	514	2009	41
ATD2-060180	614	1809	44
ATD2-060200	614	2009	50
ATD2-080180	814	1809	68
ATD2-080200	814	2009	77

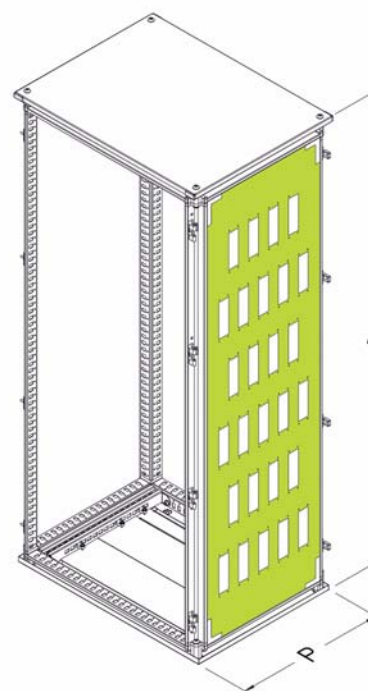
Note: when we have 2 cabinets joined together + ATD2, the protection degree inside the cabinet is IP 2X.

PUNCHED PARTITION PANEL ATD2

Punched partition panel for 24 pole connectors, manufactured from 15/10 sendzimir sheet steel.

DELIVERY

Supply includes nr. 1 piece complete with mounting accessories.



WE350Z

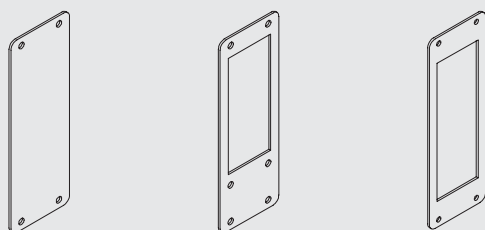
Closing plate (supply includes nr. 1 piece).

WE351Z

Reducer 24/16 poles (supply includes nr. 1 piece).

WE352

Gasket (supply includes nr. 1 piece).



WATERTIGHT PLINTH H=200 ATZ3

To be used to protect cables from chemical agents and accidental shocks.

CHARACTERISTICS

Manufactured from 20/10 press bent and welded sheet steel.

PAINT FINISH

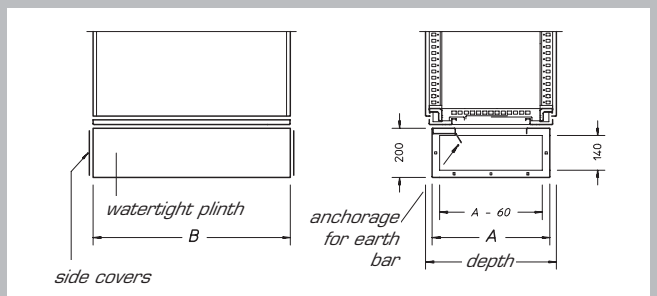
ETA standard epoxy polyester powder coating.
Colour: RAL 7025 textured finish.

DELIVERY

- plinth (without covers)
- adhesive gasket
- mounting accessories.

WATERTIGHT PLINTH				
ATZ3 CODE	CABINET DIMENSIONS		PLINTH	
	WIDTH	DEPTH	B	A
ATZ3-040040	400	414	400	378
ATZ3-040050	400	514	400	478
ATZ3-040060	400	614	400	578
ATZ3-040080	400	814	400	778
ATZ3-060040	600	414	600	378
ATZ3-060050	600	514	600	478
ATZ3-060060	600	614	600	578
ATZ3-060080	600	814	600	778
ATZ3-080040	800	414	800	378
ATZ3-080050	800	514	800	478
ATZ3-080060	800	614	800	578
ATZ3-080080	800	814	800	778
ATZ3-100040	1000	414	1000	378
ATZ3-100050	1000	514	1000	478
ATZ3-100060	1000	614	1000	578
ATZ3-100080	1000	814	1000	778
ATZ3-120040	1200	414	1200	378
ATZ3-120050	1200	514	1200	478
ATZ3-120060	1200	614	1200	578
ATZ3-120080	1200	814	1200	778

Note: to be ordered separately two side covers.



TWO SIDE COVERS ATFL

DELIVERY

- two side covers with gasket
- mounting accessories.

TWO SIDE COVERS	
ATFL CODE	CABINET DEPTH
ATFL-000400	414
ATFL-000500	514
ATFL-000600	614
ATFL-000800	814

ANTI VIBRATION FEET

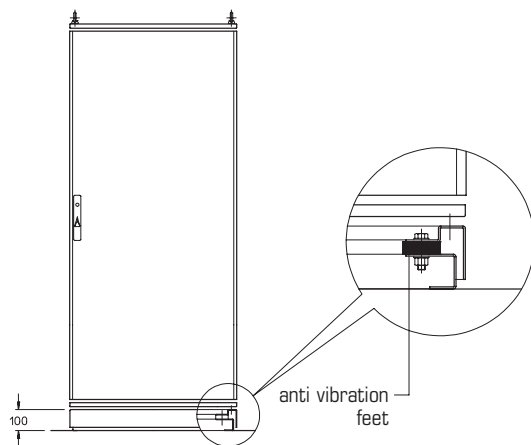
Available in 2 versions:

- 1) manufactured from 30/10 press bent sheet steel, 100mm high, with special anti vibration devices
- 2) "U" shaped hot-rolled profile, 100mm high, with anti vibration devices.

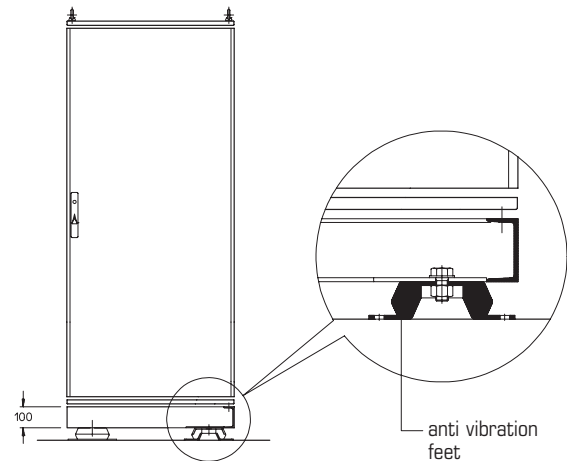
PAINT FINISH

Colour: RAL 7025 textured finish.

Available on request.



version 1



version 2

TRANSPORTATION PLINTH

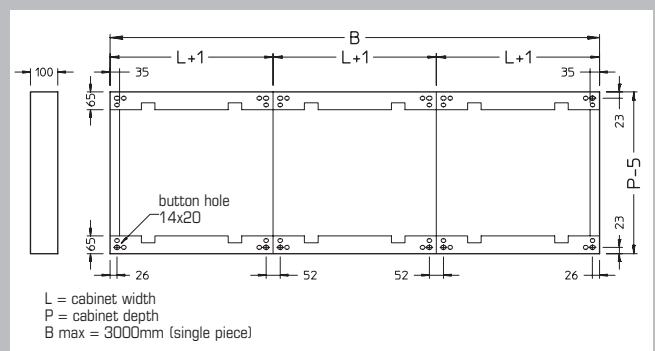
Available in 2 versions:

- 1) manufactured from 30/10 press bent sheet steel, 100mm high
- 2) "U" shaped hot-rolled profile, 100mm high.

PAINT FINISH

Colour: RAL 7025 textured finish.

Available on request.



CASTORS WTRU-001

High quality polyamide wheels.
Load capacity 80 kgs each wheel.

DELIVERY

Supply includes nr. 4 pieces (nr. 2 rotating wheels,
nr. 2 wheels with brake)



LEVELLING FEET WTPX-001

They can be applied on the cabinet structure or plinth.
They make easier the floor cleaning and adjust different height.

CHARACTERISTICS

In PVC, screws made from zinc steel

DELIVERY

Supply includes nr. 4 pieces with plate and mounting accessories.



FRAME JOINING KIT BACK TO BACK

CHARACTERISTICS

Special kit to join cabinets back to back, manufactured from 15/10 press bent sheet steel.

PAINT FINISH

Colour: RAL 7035 textured finish.

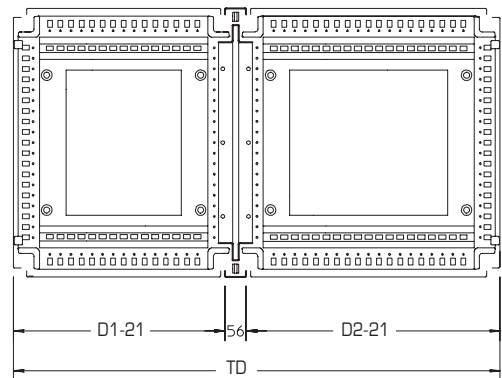
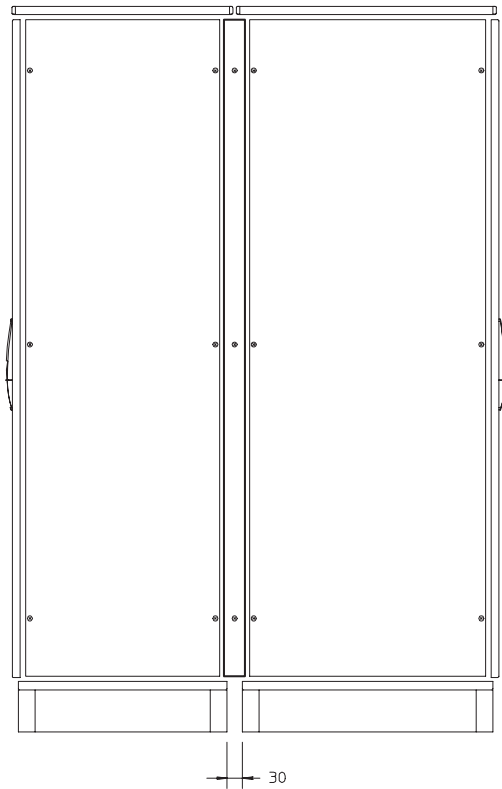
DELIVERY

- joining frame
- trim covers, gasket and mounting accessories.

FRAME JOINING KIT BACK TO BACK

ATTP CODE	DIMENSIONS	
	L	H
ATTP060180	600	1800
ATTP080180	800	1800
ATTP120180	1200	1800
ATTP060200	600	2000
ATTP080200	800	2000
ATTP120200	1200	2000

Note: plinth with side crosspieces to be ordered separately.



LIFTING DEVICE FOR JOINED CABINETS

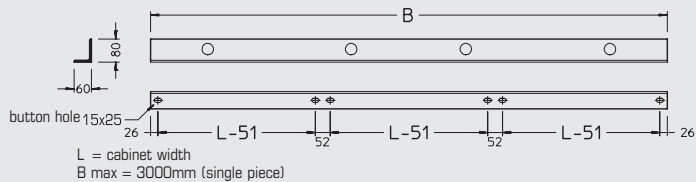
CHARACTERISTICS

"L" shaped profile hot-rolled 80x60mm.

PAINT FINISH

Colour: RAL 7025 textured finish.

Available on request.

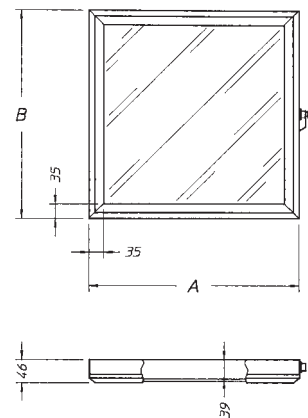


ALUMINIUM WINDOW WIPX

To be used to protect components mounted on the door.
Manufactured from anodized aluminium with glazed panel and sealing gasket.

DELIVERY

Supply includes nr. 1 piece.



ALUMINIUM WINDOW

WIPX CODE	A	B
WIPX-44	400	400
WIPX-55	500	500
WIPX-66	600	600

ARETA CORNER CABINET

CHARACTERISTICS

Manufactured from 15/10 press bent sheet steel.

PAINT FINISH

Colour: RAL 7035 textured finish.

DELIVERY

- joining frame
- removable front trim panel
- side trim panels
- gasket and mounting accessories.

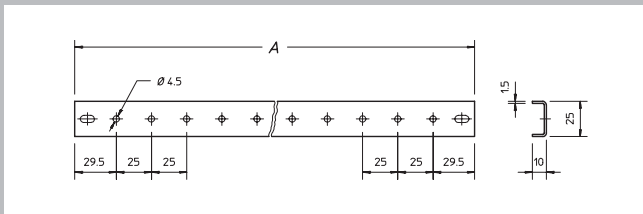
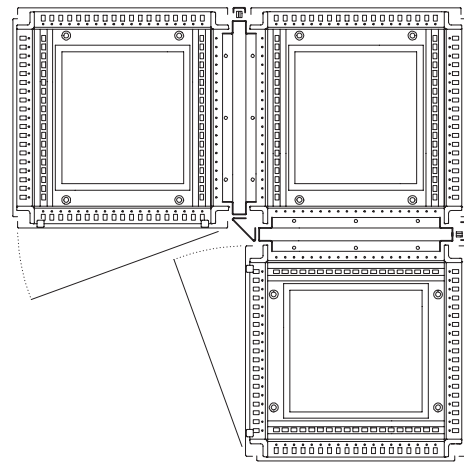
CONFORMITY AND APPROVAL



PROTECTION RATINGS

- IP 55 complying with IEC EN62208; EN60529
- NEMA 12 complying with UL508A; UL50
- impact resistance IK10 complying with IEC EN62208; EN50102.

Available on request.



DOOR RAIL WTTO

To be applied to the door stiffening frame to allow the fixing of cables or trunking.

CHARACTERISTICS

Manufactured from 15/10 sendzimir sheet steel.

DELIVERY

Supply includes nr. 2 pieces complete with mounting accessories.

DOOR RAIL		
WTTO CODE	CABINET WIDTH	A
WTTO-000400	400	284
WTTO-000600	600-1200	484
WTTO-000700	1400	584
WTTO-000800	800-1600	684
WTTO-001000	1000	884

NEW

DOOR LOCK FOR FLAT-PACK ENCLOSURES WTBPC/B/A

It can be used on flat-pack Areta and E.go enclosures, as a complement to the door lock of the standard main switches. The secondary doors in line are opened only after the main door/s has opened.

The position of the main switch of flat-pack enclosures is not binding, as it is independent of the door recess.

The opening/closing of secondary doors occurs simultaneously, following the locking/unlocking of the door with the main switch.

CHARACTERISTICS

Door lock parts made of 25/10 thick galvanized sheet steel. Connection blocks and transmission rods made of galvanized sheet steel.

① **WTBPC-001**

Control device for enclosure with main switch (main enclosure)

② **WTBPC-001**

Door lock for flat-pack enclosures (to be installed on secondary enclosures)

③+④ **WTBPA-060 L=0600**
WTBPA-080 L=0800
WTBPA-120 L=1200

Transmission rods (10 pcs.) with connection blocks (to transfer the lock status from the main to the secondary enclosures).

For each secondary enclosure, one rod of the same size as the enclosure is required.

NEW

DISCONNECTING SWITCH WTBPU-001 (US VERSION)

Regulations for the US market prescribe a safety lock for a single enclosure or a set of flat-pack enclosures.

The disconnecting switch can be installed only with the following models of main switches:

- 1494 V-H1 (operating lever) - Allen Bradley
- 9422 A1 - Square D
- Max Flex Series/ FHOH - ITE Siemens
- Type 1 and 2 - General Electric TDA

⑤ **WTBPU-001**

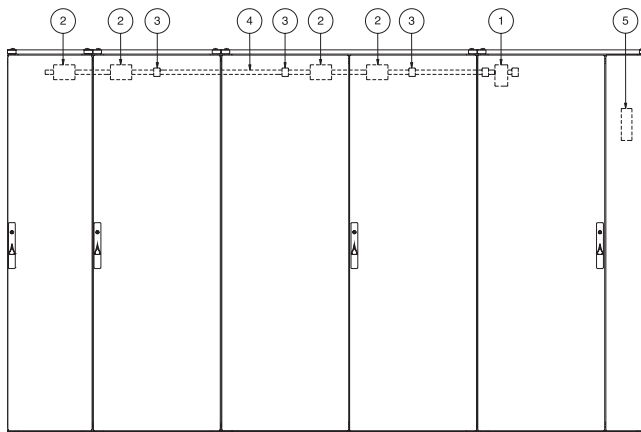
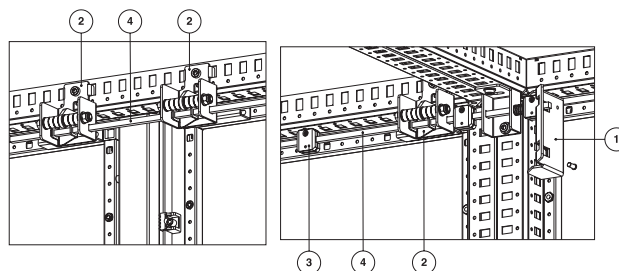
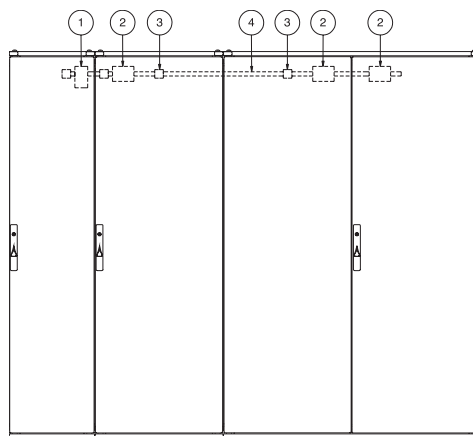
Safety lock for main door (for US).

For complete installation, a system with door lock for main enclosure, locks for secondary doors and transmission rods of the same width as the enclosure is required.

CHARACTERISTICS

Door lock parts made of 25/10 thick galvanized sheet steel.

NOTE: for flat-pack enclosures, the main enclosures that incorporate the disconnecting switches can be aligned only to the right (US version).



DOOR INTERLOCK WTBP-001

This mechanical door interlock allows the opening of the second door only when the main one is open.

CHARACTERISTICS

Manufactured from 20/10 zincpassivated sheet steel.

DELIVERY

Supply includes nr. 1 piece supplied with mounting accessories.



DRAWING DESK WTRL

The desk provides a stable surface for documents, computer or measuring devices; it can be easily folded and locked within the door frame space. To be mounted directly onto the stiffening frame of Areta and E.go blank doors.

CHARACTERISTICS

Manufactured from 15/10 sheet steel.

PAINT FINISH

ETA standard epoxy polyester powder coating. Colour: RAL 7035 textured finish.

DELIVERY

Supply includes nr. 1 piece with mounting accessories.

DRAWING DESK	
WTRL CODE	CABINET DIMENSIONS
WTRL000600	600
WTRL000800	800

PLAN POCKET WTTS

CHARACTERISTICS

Large size plan manufactured from 15/10 sheet steel.

PAINT FINISH

Colour: RAL 7035.

DELIVERY

Supply includes nr. 1 piece complete with mounting screws.

PLAN POCKET	
WTTS CODE	CABINET WIDTH
WTTS000500	500
WTTS000600	600
WTTS000700	700
WTTS000800	800
WTTS001000	1000



PLAN POCKET WA050

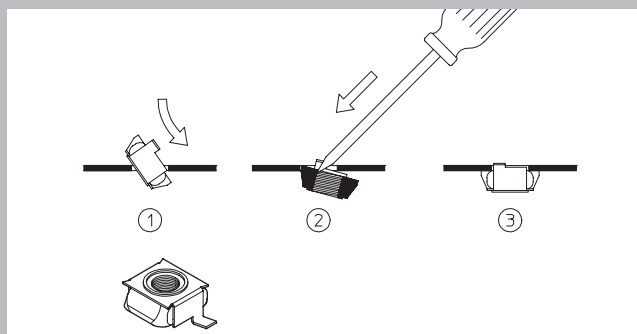
A4 sheet size plan pocket manufactured from thermoplastic material.

DELIVERY

Supply includes nr. 1 piece with double sided adhesive tape.

CAGE NUTS M8 WTDA-001

Supply includes nr. 20 pieces.

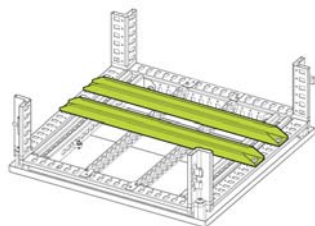


TRANSFORMER SUPPORT WTST

Manufactured from 25/10 press bent sendzimir sheet steel allowing the sliding of special nuts.
The two rails and the nuts are adjustable, thus allowing easy fixing and positioning of transformers.

DELIVERY

Supply includes nr. 2 rails with mounting accessories.



RAILS FOR CABLE FIXING WTTF

WTTF CODE	CABINET WIDTH
WTTF-000400	400
WTTF-000600	600
WTTF-000800	800
WTTF-001000	1000
WTTF-001200	1200
WTTF-001400	1400
WTTF-001600	1600

TRANSFORMER SUPPORT WTST

WTST CODE	CABINET WIDTH
WTST-000400	400
WTST-000600	600
WTST-000800	800
WTST-001000	1000
WTST-001200	1200
WTST-001400	1400
WTST-001600	1600

Note: For Areta/E.go cabinet with medium/high loads, fast fixing brackets are suggested (please check on page 55)

WA385

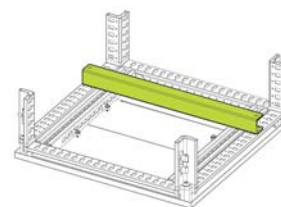
Special sliding nuts to fix transformer.
Supply includes nr. 4 nuts, screws and washers.

RAILS FOR CABLE FIXING WTTF

CHARACTERISTICS
Manufactured from 30/10 zincpассивated sheet steel.

DELIVERY

Supply includes nr. 1 piece with mounting accessories.



FLUORESCENT LAMP WTLA

NEW

The new fluorescent lamps are characterized with electronic circuits that both increase the luminous emission and at the same time eliminate the stroboscopic effect of the traditional neon lamps. The new electronic lamps WTLA last more than the neon and incandescent ones, so they are more efficient, convenient & energy savers and they comply better with the existing norms of the lighting systems.

Up to 5 lamps can be mounted in a single cabinet.

CHARACTERISTICS

Casing in aluminium finishing, diffuser in methacrylate with switch.

DELIVERY

Supply includes nr. 1 piece supplied with adjustable fixing brackets, mounting accessories and a bipolar connector for the wiring.

MARK



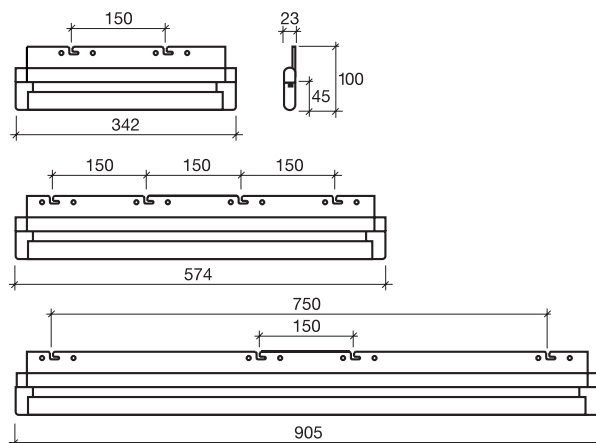
PROTECTION RATINGS

IP 20.



FLUORESCENT LAMP WTLA

WTLA CODE	NOMINAL VOLTAGE FREQUENCY	POWER W	LENGTH mm
WTLA-050	220÷240V 50÷60Hz	8	342
WTLA-060	220÷240V 50÷60Hz	13	574
WTLA-065	110÷130V 60Hz	13	574
WTLA-070	220÷240V 50÷60Hz	21	905



FLUORESCENT LAMP WTLA-030/WTLA-035

Fluorescent lamp 11W, 230V nominal voltage, with SCHUKO style power suitable for all the cabinets and panels.
 - the installation support is included and further devices can be used
 - the lamp can be mounted with screws on narrow or large areas and it can be fixed to DIN profiles of 35mm
 - available on request without plug: WTLA-035.

MARK



To be ordered separately:
 - fixing support WTSL-002.



LAMP SUPPORT WTSL-002

Manufactured from 15/10 sendzimir sheet steel.



MAGNETIC PLATE WTPM-001

Used in alternative when the space available for fixing the lamp is reduced.



VDE OUTLET WTVD-001

For application on DIN profile.
 Dimensions: WxHxD=52x52x59.

MICROSWITCH WI100

Complying with IEC 337-VDE 0660.

CONFORMITY AND APPROVAL



Fast-installed thermoplastic support.
 Supply includes microswitch with support and mounting accessories.



NEW

THREE-PHASE FLASHING SAFETY DEVICE W1105

The device indicates the power status of the distribution board and shows it visually by means of three high-yield LEDs. It is connected directly after the main switch and positioned so that it is clearly visible when the door is opened. Flashing indicates dangerous voltage. The electronic circuit based on SMD technology is optimized for multiple voltage ratings (110 ÷ 690V) both for single-phase and three-phase circuits.

The safety device W1105 is also provided with electrically separated protection terminals to insulate the parts under voltage, suitable for large section wires (2.5mm²) and with screw terminals up to 5mm diameter.

DELIVERY

- metal fixing bracket
- flashing device
- interlocking limit switch with NC contact for auxiliary circuits.

CONFORMITY AND APPROVAL



compliant with IEC 947-5-1 CEI 7.45 EN60947.5.1.

PROTECTION CLASS

II.



Upon request, a N.O. contact WI 107 can be supplied separately.



WA218

M5 ø 5.5x13 zinc-passivated self-tapping screws.
Supply includes: 50 pieces.

CABINET MOUNTING KIT ATKM-001

Dynamometric key.



CABINET MOUNTING KIT ATKM-002

Electric screwdriver with battery charger.



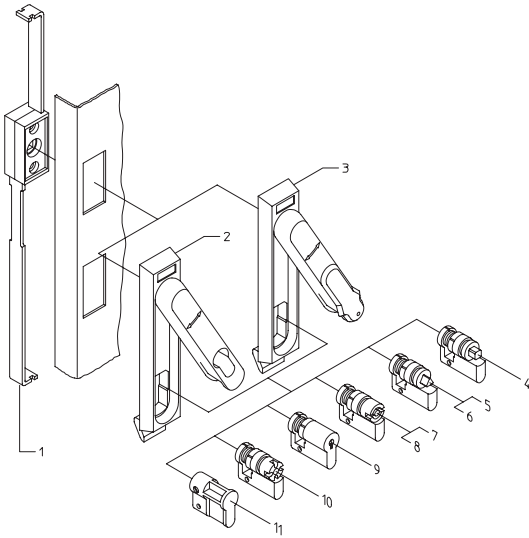
CABINET MOUNTING KIT ATKM-003

Professional electric screwdriver with battery charger.

CABINET MOUNTING KIT ATKM-004

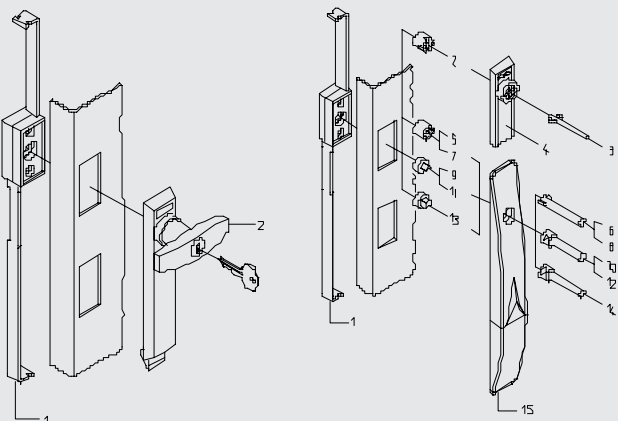
Kit of 2 Allen wrenches (1 for dynamometric key and 1 for electric screwdriver).





LOCKING SYSTEM WE

WE CODE	REF.	DESCRIPTION
WE005	1	ROD SYSTEM
WE090	2	SWINGING HANDLE WITH LOCKING COVER
WE100	3	SWING. HANDLE WITH SEAL AND LOCKING COVER
WE140	4	LOCK INSERT ∇ 7
WE125	5	LOCK INSERT ∇ 7
WE130	6	LOCK INSERT ∇ 8
WE115	7	ETA LOCK INSERT \emptyset 3
WE120	8	ETA LOCK INSERT \emptyset 5
WE110	9	INSERT WITH KEY LOCK
WE150	10	FIAT LOCK INSERT
WE105	11	BLANK INSERT



LOCKING SYSTEM WE

WE CODE	REF.	DESCRIPTION
WE005	1	ROD SYSTEM
WE220	2	T HANDLE WITH KEY LOCK

LOCKING SYSTEM WE

WE CODE	REF.	DESCRIPTION
WE005	1	ROD SYSTEM
WE080	2	FIAT INSERT
WE210	3	FIAT KEY
WE025	4	LOCKING COVER FOR FIAT LOCK
WE030	5	ETA INSERT \emptyset 3
WE160	6	ETA KEY \emptyset 3
WE040	7	ETA INSERT \emptyset 5
WE170	8	ETA KEY \emptyset 5
WE050	9	INSERT ∇ 7
WE180	10	KEY ∇ 7
WE060	11	INSERT ∇ 8
WE190	12	KEY ∇ 8
WE070	13	INSERT ∇ 7
WE200	14	KEY ∇ 7
WE017	15	ARETA LOCKING COVER